

**MUTUAL RECOGNITION ARRANGEMENT ON CONFORMITY
ASSESSMENT OF ELECTRICAL AND ELECTRONIC EQUIPMENT**

**APEC EEMRA
Information Interchange Format**

PART 1

Introduction

This format is being prepared to assist member economies participating in the APEC MRA to prepare documentation required for participation in a consistent format.

It is expected that each participating member economy would submit their information in the recommended format to the APEC Secretariat as required by the MRA.

The format is based on the Information Notes on Good Practice for Technical Regulation and therefore provides for information to be supplied for each of the regulatory regimes identified in the notes. There are 7 regimes, they are for products requiring inspection, products requiring licensing, products requiring batch testing, products requiring approval (or certification), products requiring listing or registration, supplier declarations and essential safety requirements. Participating member economies need only provide information relating to the regimes which are in force in their economy. The regimes that are not enforced by the economy need to be noted also, please indicate this by placing 'none' in the standards table on the front of each regime.

Where more than one regulatory system applies within a participating member economy information on each regulatory system should be provided separately.

The format also draws upon the survey on Conformity Assessment of Electrical and Electronic Equipment conducted by the APEC SCSC. The format includes reference to applicable international standards and uses the international convention for describing the relationship of national and international standards, i.e. IDT for identical, MOD for modified, and NEQ for not equal.

When information makes reference to documents or legislation, the documents or legislation should be available on a website for that economy or provided as part of the information supplied to the APEC Secretariat.

ECONOMY – Chinese Taipei

APEC EEMRA Information Interchange Format

Contact Points:

Mr. Chin-Sin Shu

Director of the 5th Division

Bureau of Standards, Metrology & Inspection

4 Chinan Road, Section 1, Taipei 100, Chinese Taipei

E-mail: cs.shu@bsmi.gov.tw

Tel: (886 2) 2343 1787

Fax: (886 2) 2343 1804

Mr. Huei-Shiun Lin

Director of the 3rd Division

Bureau of Standards, Metrology & Inspection

4 Chinan Road, Section 1, Taipei 100, Chinese Taipei

E-mail: hs.lin@bsmi.gov.tw

Tel: (886 2) 2343 1776

Fax: (886 2) 3343 3991

PART I – INFORMATION EXCHANGE

Regime Overview

In Chinese Taipei, the basic and comprehensive law governing the inspection and certification is the Commodity Inspection Act. This law covers inspection of products to be imported or exported or domestically manufactured, general inspection procedures and penalty for violation.

The Bureau of Standards, Metrology and Inspection, Ministry of Economic Affairs has designated a list of commodities subject to mandatory inspection to ensure the conformity with technical standards prior to the importation and sale on the local market.

The inspection of Electrical and Electronic commodities is conducted based on four conformity assessment schemes, namely Batch-by-Batch Inspection (BBI), Type-Approved Batch Inspection (TABI), Registration of Product Certification (RPC), and Declaration of Conformity (DoC).

Among EE products, both TABI and RPC schemes are applicable to 162 items (classified by C.C.C. Code) of electrical products and 68 items of electronic products, at the choice of manufacturers or importers. RPC scheme is applicable to 168 items and 76 items of electrical products and electronic products, respectively. DoC is applicable to 43 items of information technology (IT) products. BBI scheme is applicable to 6 items of video game products. Regulations for commodity inspection and market surveillance are prescribed in the Commodity Inspection Act as well as other regulations and directions.

The inspection standards (CNS standards) of EE and IT products are harmonized with IEC (safety) and CISPR (EMC) international standards. In addition, energy efficiency testing is necessary for some products, such as refrigerators, air conditioners, dehumidifiers and electric pots. The minimum energy efficiency of these products must meet the requirements of the Bureau of Energy, Ministry of Economic Affairs.

Product labelling is mandatory. Imported products must have labels and instructions in Chinese, which may not be simpler than the version in the original language.

Legislative References

Legislation Applicable	Scope of the Legislation	Government Agency
Commodity Inspection Act 2007	Electrical Safety	Bureau of Standards, Metrology, and Inspection
	Electromagnetic Compatibility	

1. PRODUCTS REQUIRING INSPECTION

None

2. PRODUCTS REQUIRING LICENSING

None

3. PRODUCTS REQUIRING BATCH TESTING

Description of the Regime

Batch-by-batch inspection (BBI) applies to products with unstable manufacturing technology or those that pose concerns of risk or danger. In order for domestically manufactured or imported products to be placed on the market, manufacturers or importers must apply to the BSMI for inspection of the products before they are shipped or imported.

As for Type-approved Batch Inspection (TABI) scheme, manufacturers or importers shall have their products type-tested by the BSMI or BSMI-recognized testing laboratories, and then file an application for type approval with the BSMI or its branches.

After manufacturers or importers have obtained a type-approval certificate, they are still required to file an application for batch inspection with the BSMI each time before their products arrive at the port of entry. The BSMI will then perform inspection with simplified procedures. Additional samples may be required for further testing if it is deemed necessary. The application fee for a type approval is NT\$3,500, and a type approval certificate is generally valid for three years.

The fees for type testing vary by products and depend on the fee schedule of the testing laboratories.

At present, TABI scheme is one of the alternative conformity assessment schemes for products subject to Registration of Product Certification (RPC) scheme. Products covered by TABI are the same as those listed under “4. PRODUCTS REQUIRING APPROVAL (OR CERTIFICATION)”, except 6 items of video game products are limited to BBI scheme.

Testing Facilities

The Bureau of Standards, Metrology and Inspection, Ministry of Economic Affairs

Approval (Certification) Agencies

The Bureau of Standards, Metrology and Inspection, Ministry of Economic Affairs

Batch Testing Agencies

The Bureau of Standards, Metrology, and Inspection, Ministry of Economic Affairs

Labeling Requirements

The Commodity Inspection Mark printed and issued by the BSMI shall be affixed to the products subject to BBI scheme after they pass the inspection.

Example:



As for TABI scheme, the Commodity Inspection Mark with the Roman letter 'T' followed by a 5-digits designated code given by the BSMI are allowed to use after the products have passed the inspection requirements.

Example:

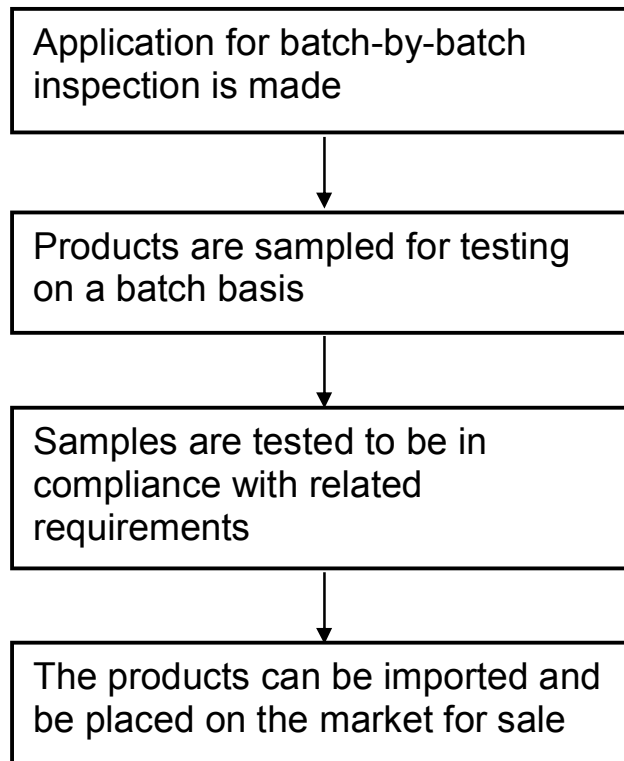


T30001

Regulatory and Legislation Requirements

Commodity Inspection Act 2007

Diagrammatic representation or flowchart of the regime



4. PRODUCTS REQUIRING APPROVAL (OR CERTIFICATION)

Description of the Regime

Under Registration of Product Certification (RPC) scheme, manufacturers/importers must have their products type-tested in advance (Module II) by the BSMI, recognized designated testing laboratories (local or overseas) or testing laboratories recognised under MRA before applying for registration of their products. Manufacturers or importers will also be required to ensure by declaration (Module III) that all products whether made at their manufacturing facilities or imported are in conformity with the prototypes submitted for type test at Module II stage.

In addition, the quality management systems of the production premises must be in conformity with Module IV (full quality assurance), Module V (production quality assurance) or Module VII (factory inspection). For Module IV and Module V, they are required to get certification in accordance with the CNS 12680 (ISO 9000) series of standards. As for Module VII, it is required to obtain a factory inspection report issued by the BSMI or BSMI-recognized factory inspection bodies. A declaration of conformity is also required to ensure that the quality of the mass-produced commodities is in conformity with that shown in the type-test report.

Products will be allowed to use the Commodity Inspection Mark with the letter 'R' and the identification number given by the BSMI, after they are certified and registered with the BSMI. These products can then pass through customs directly without any further inspection if not be sampled by RPC border check procedure. The application fee and annual fee for RPC are both NTD \$5,000(about USD \$170) for each certification, and the RPC certifications are valid for three years. If there are any serial products, the extra NTD \$3,000(about USD \$102) of application fee is needed for every application in each certification.

The fees for type testing vary by products and depend on the fee schedule of the testing laboratories.

Currently, there are 168 items of electrical products and 76 items of electronics products subject to RPC scheme. In addition, except 6 items (i.e. 8501.40.10.00.8, 8501.40.90.00.1, 8501.51.10.00.4, 8501.51.90.00.7, 8501.52.10.00.3, and 8501.52.90.00.6) of electrical products (e.g., explosion proof AC

motors, AC motors) and 8 items (i.e. 8504.40.20.00.3, 8504.40.91.00.7, 8504.40.94.00.4, 8504.40.99.90.0, 8507.60.00.00.9, 8507.80.00.10.3, 8507.80.00.90.6, and 8528.70.10.00.9) of electronics products (e.g., secondary lithium batteries, mobile power banks, battery chargers) are limited subject to RPC scheme, 162 items of electrical products and 68 items of electronics products could alternatively apply to TABI scheme.

Testing Facilities

Testing laboratories that meet relevant requirements may apply to the BSMI for recognition and they will be called the "designated testing laboratories" after recognition is granted. The BSMI recognizes testing laboratories according to the "Regulations Governing Recognition of Designated Testing Laboratory for Commodity Inspection." The BSMI accepts applications from domestic and foreign testing laboratories for recognition in the electromagnetic compatibility (EMC) testing and safety testing field.

Currently, there are 47 designated EMC labs and 62 designated safety labs in Chinese Taipei. In addition, there are 19 designated overseas EMC testing laboratories in total, including 1 EMC lab in United Kingdom, 1 EMC lab in Germany and 17 EMC labs in Japan. As for safety testing, there are 2 designated safety testing labs in Japan.

Certification bodies

Domestic certification bodies applying for recognition by the BSMI shall demonstrate in compliance with the BSMI requirements and be accredited by the TAF. The applicant applying for recognition shall be administrative agencies, colleges/universities, or non-profit juristic persons. The BSMI recognizes certification bodies according to the "Regulations Governing Commission of Commodity Inspection Operations".

Currently, there are 3 recognized certification bodies in Chinese Taipei for certain EE products, such as audio and video products, air conditioners, electrical tools and fluorescent lamps.

Designating Authority

The Bureau of Standards, Metrology, and Inspection, the Ministry of Economic Affairs

Labelling Requirements

The Commodity Inspection Mark with the Roman letter 'R' followed by a 5-digits designated code given by the BSMI are allowed to use after the products have passed the inspection requirements.

Example:



R30001

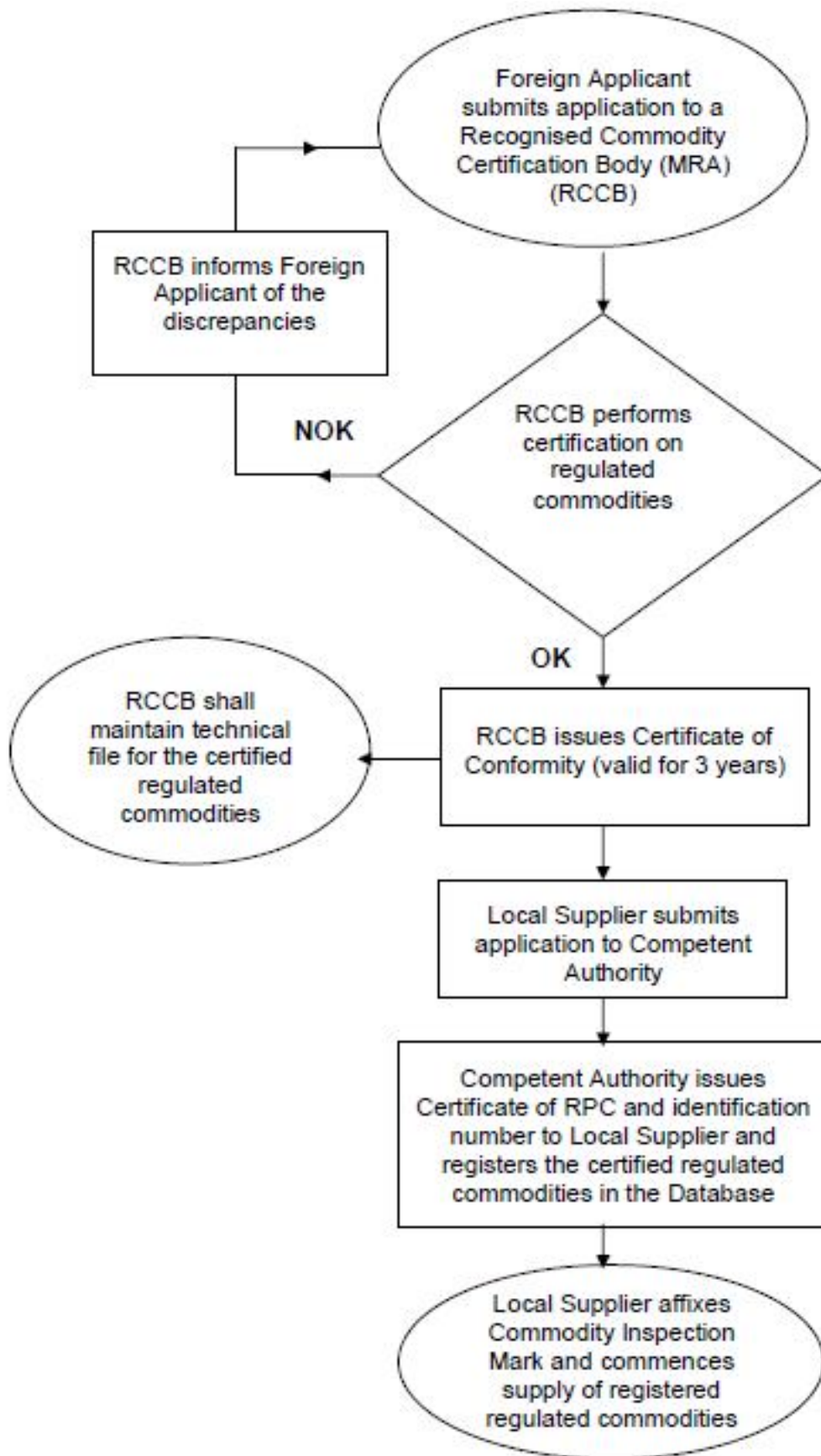
Regulatory and Legislation Requirements

Commodity Inspection Act 2007.

Regulations Governing Commission of Commodity Inspection Operations 2013.

Regulations Governing Recognition of Designated Testing Laboratory for Commodity Inspection 2008.

Diagrammatic representation or flowchart of the regime



5. PRODUCTS REQUIRING LISTING OR REGISTRATION

None

6. SUPPLIER DECLARATIONS

Description of the Regime

Commodities subject to the Declaration of Conformity (DoC) scheme are required to be tested by the BSMI, recognized designated testing laboratories (local or overseas) or testing laboratories recognised under MRA. Once the commodities are tested and shown to be in compliance with inspection standards, manufacturers/importers shall sign a Declaration of Conformity and maintain test reports or relevant technical documents of the commodities.

Manufacturers/importers shall apply to be registered to acquire the identification number. Upon BSMI receipts of the application, the identification number with the Roman letter 'D' followed by a 5-digits designated code will be given to the applicants. Accordingly, the manufacturers/importers can then affix the Commodity Inspection Mark with the identification numbers on the regulated commodities and place the commodities on the market.

Currently, there are 43 electronics/IT products (classified by C.C.C. Code) subject to the DoC scheme.

Testing Facilities

The Same as the testing facilities listed under item 4.

Labelling Requirements

The Commodity Inspection Mark with the Roman letter 'D' followed by a 5-digits designated code given by the BSMI are allowed to use after the conformity assessment procedures have been completed.

Example:



D30001

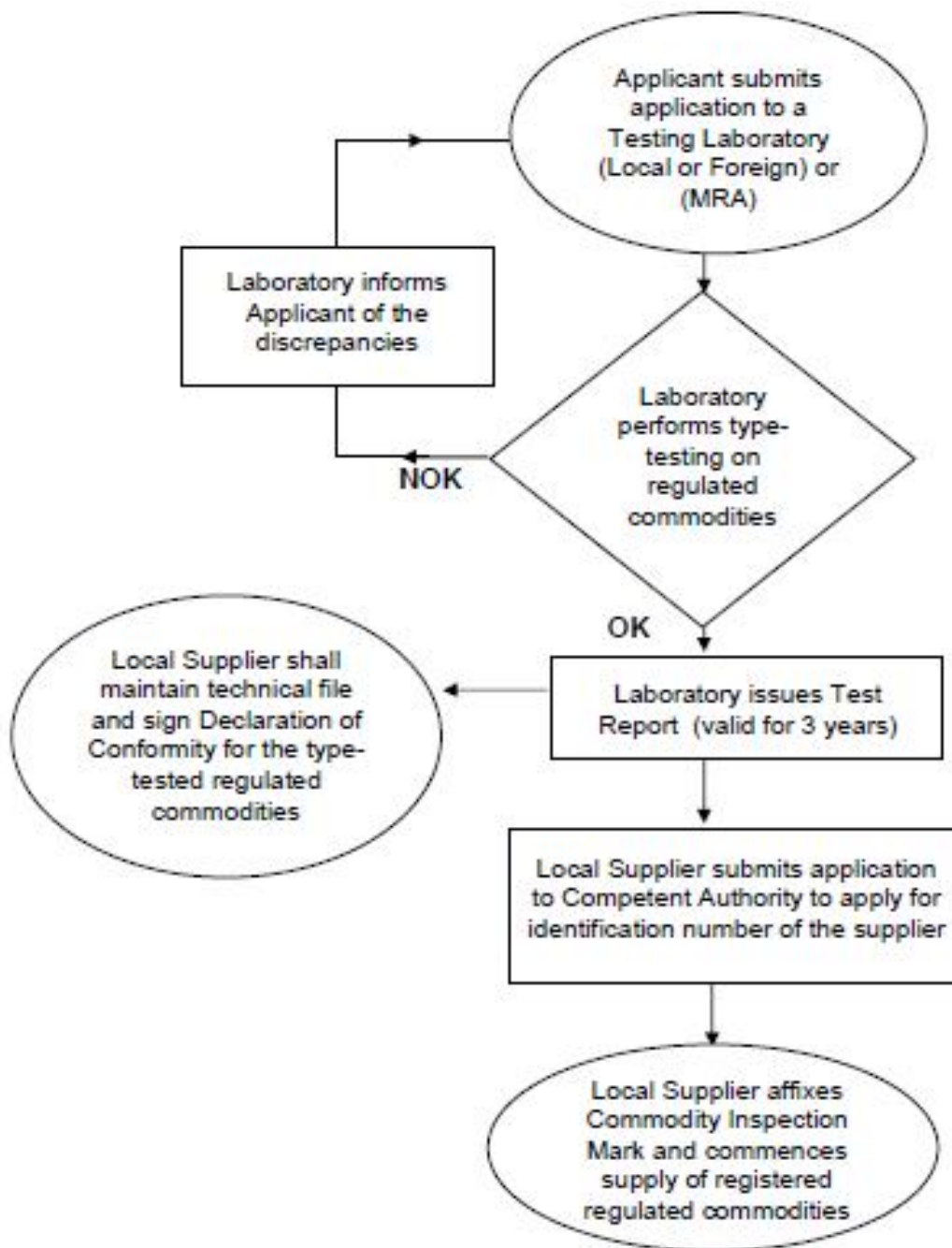
Regulatory and Legislation Requirements

Commodity Inspection Act 2007

Regulations Governing Commission of Commodity Inspection Operations 2013.

Regulations Governing Recognition of Designated Testing Laboratory for Commodity Inspection 2008.

Diagrammatic representation or flowchart of the regime



7. **ESSENTIAL SAFETY REQUIREMENTS**

None

8. **SUMMARY OF UPDATE**

None

Products covered by the above inspection schemes

1. Product covered by batch testing (BBI scheme)

Product type or grouping (classified by C.C.C. Code)	Regulations	Standards			
		Domestic Standards	Please tick box if mandatory	Relevant International Standards	Extent of Alignment
9504.30.10.00-5 Articles for funfair, table or parlour games, operated by coins, banknotes , bank card,token or other type of payment, other than automatic bowling alley equipment	Commodity Inspection Act	CNS 14465	√	Nil	NEQ
9504.30.90.00-8 Other games, operated by coins, banknotes ,bank card, ,token or other type of payment, other than automatic bowling alley equipment	ditto	CNS 14465	√	Nil	NEQ
9504.50.00.10-0 Other video games of a kind used with a television receiver, without software	ditto	CNS 12473	√	Nil	NEQ
9504.50.00.19-1 Other video games of a kind used with a television receiver	ditto	CNS 12473 CNS 14465	√	Nil Nil	NEQ NEQ
9504.50.00.90-3 Other video game consoles and machines,other than those of subheading 950430	ditto	CNS 12473 CNS 14465	√	Nil Nil	NEQ NEQ

Product type or grouping (classified by C.C.C. Code)	Regulations	Standards			
		Domestic Standards	Please tick box if mandatory	Relevant International Standards	Extent of Alignment
9504.90.90.00-5A Other articles for funfair, table or parlour games (inspection scope: other than motor vehicles designed to be ridden by children, toy, pedal or machine operated)	ditto	CNS 14465	√	Nil	NEQ

2. Products covered by approval or certification (RPC/TABI Scheme)

2.1. Electrical products

Product type or grouping (Electrical products classified by C.C.C. Code)	Regulations	Standards			
		Domestic Standards	Please tick box if mandatory	Relevant International Standards	Extent of Alignment
6301.10.00.00.2 Electric blankets (inspection scope: not exceeding 300V, other than the medical devices specified by the Pharmaceutical Affairs Act)	Commodity Inspection Act	CNS 13783-1 (2004) CNS 3765 (2005) IEC 60335-2-81 (2002) IEC 60335-2-17 (2002) IEC 60335-2-23 (2003)	√	CISPR 14-1 IEC 60335-1 IEC 60335-2-81 (2002) IEC 60335-2-17 (2002) IEC 60335-2-23 (2003)	IDT MOD IDT IDT IDT
6307.90.90.90.1F Other made up textile articles (inspection scope: electric body warmer for personal use, not exceeding 300V, other than the medical devices specified by the Pharmaceutical Affairs Act)	ditto	CNS 13783-1 (2004) CNS 3765 (2005) IEC 60335-2-81 (2002) IEC 60335-2-17 (2002) IEC 60335-2-23 (2003)	√	CISPR 14-1 IEC 60335-1 IEC 60335-2-81 (2002) IEC 60335-2-17 (2002) IEC 60335-2-23 (2003)	IDT MOD IDT IDT IDT
8414.51.00.00.2A Fans (inspection scope: only below 300V, single phase, AC and output not exceeding 125W)	ditto	CNS 3765 (2005) IEC 60335-2-80 (2004) CNS 13783-1 (2004)	√	IEC 60335-1 IEC 60335-2-80 (2004) CISPR 14-1	MOD IDT IDT
8414.59.00.00.4A Fans (inspection scope: only below 300V, single phase, AC and output exceeding 125W)	ditto	CNS 3765 (2005) IEC 60335-2-80 (2004) CNS 13783-1 (2004)	√	IEC 60335-1 IEC 60335-2-80 (2004) CISPR 14-1	MOD IDT IDT
8414.59.00.00.4C Other fans (inspection scope: Hand	ditto	CNS 3765 (2005) IEC 60335-2-23 (2003-10)	√	IEC 60335-1 IEC 60335-2-23 (2003-10)	MOD IDT

Product type or grouping (Electrical products classified by C.C.C. Code)	Regulations	Standards			
		Domestic Standards	Please tick box if mandatory	Relevant International Standards	Extent of Alignment
dryers, only below 300V AC, single phase)		CNS 13783-1 (2004)		CISPR 14-1	IDT
8414.60.00.00.1 Ventilating or recycling hoods incorporating a fan having maximum horizontal side not exceeding 120 cm (inspection scope: only range hood below 300V, single phase, AC)	ditto	CNS 3765 (2005) IEC 60335-2-31 (2002) CNS 13783-1 (2004)	√	IEC 60335-1 IEC 60335-2-31 (2002) CISPR 14-1	MOD IDT IDT
8415.10.10.10.7 Incorporating a refrigerating unit air conditioning machines, window or wall types, self-contained (inspection scope: those having cooling capacity not exceeding 71kW)	ditto	CNS 3765 (2005) IEC 60335-2-40 (2005) CNS 3615 (2009) Excluding heating performance in section 4.6 & 4.7 & 4.8 & 4.9 CNS 13783-1 (2004) or CNS 13438 (2004)	√	IEC 60335-1 IEC 60335-2-40 (2005) Nil CISPR 14-1 CISPR 22	MOD IDT NEQ IDT IDT
8415.10.10.20.5 Incorporating a refrigerating unit air conditioning machines, window or wall types, split-system (inspection scope: those having cooling capacity not exceeding 71kW)	ditto	CNS 3765 (2005) IEC 60335-2-40 (2005) CNS 3615 (2009) Excluding heating performance in section 4.6 & 4.7 & 4.8 & 4.9 CNS 13783-1 (2004) or CNS 13438 (2004)	√	IEC 60335-1 IEC 60335-2-40 (2005) Nil CISPR 14-1 CISPR 22	MOD IDT NEQ IDT IDT
8415.90.10.00.2	ditto	CNS 3765 (2005) IEC 60335-2-40 (2005)		IEC 60335-1 IEC 60335-2-40 (2005)	MOD IDT

Product type or grouping (Electrical products classified by C.C.C. Code)	Regulations	Standards			
		Domestic Standards	Please tick box if mandatory	Relevant International Standards	Extent of Alignment
Indoor or outdoor units for split-system air conditioning machines (inspection scope: those having cooling capacity not exceeding 71kW)		CNS 3615 (2009) Excluding heating performance in section 4.6 & 4.7 & 4.8 & 4.9 CNS 13783-1 (2004) or CNS 13438 (2004)	√	Nil CISPR 14-1 CISPR 22	NEQ IDT IDT
8415.10.90.10.0 Other air conditioning machines, window or wall types, self-contained (inspection scope: those having cooling capacity not exceeding 71kW)	ditto	CNS 3765 (2005) IEC 60335-2-40 (2005) CNS 3615 (2009) Excluding heating performance in section 4.6 & 4.7 & 4.8 & 4.9 CNS 13783-1 (2004) or CNS 13438 (2004)	√	IEC 60335-1 IEC 60335-2-40 (2005) Nil CISPR 14-1 CISPR 22	MOD IDT NEQ IDT IDT
8415.10.90.20.8 Other air conditioning machines, window or wall types, split-system (inspection scope: those having cooling capacity not exceeding 71kW)	ditto	CNS 3765 (2005) IEC 60335-2-40 (2005) CNS 3615 (2009) Excluding heating performance in section 4.6 & 4.7 & 4.8 & 4.9 CNS 13783-1 (2004) or CNS 13438 (2004)	√	IEC 60335-1 IEC 60335-2-40 (2005) Nil CISPR 14-1 CISPR 22	MOD IDT NEQ IDT IDT
8415.81.00.00.5A Package Air conditioner (inspection scope: those having cooling capacity not exceeding 71kW)	ditto	CNS 3765 (2005) IEC 60335-2-40 (2005) CNS 3615 (2009) Excluding heating performance in section 4.6 & 4.7 & 4.8 & 4.9	√	IEC 60335-1 IEC 60335-2-40 (2005) Nil	MOD IDT NEQ

Product type or grouping (Electrical products classified by C.C.C. Code)	Regulations	Standards			
		Domestic Standards	Please tick box if mandatory	Relevant International Standards	Extent of Alignment
		CNS 13783-1 (2004) or CNS 13438 (2004)		CISPR 14-1 CISPR 22	IDT IDT
8415.82.00.00.4A Package Air conditioner (inspection scope: those having cooling capacity not exceeding 71kW)	ditto	CNS 3765 (2005) IEC 60335-2-40 (2005) CNS 3615 (2009) Excluding heating performance in section 4.6 & 4.7 & 4.8 & 4.9 CNS 13783-1 (2004) or CNS 13438 (2004)	√	IEC 60335-1 IEC 60335-2-40 (2005) Nil CISPR 14-1 CISPR 22	MOD IDT NEQ IDT IDT
8418.21.20.00.1 Compression-type household refrigerators, having a capacity over and including 500L but less than 800L. (inspection scope: only below 300V, single phase, AC and total capacity not exceeding 700L)	ditto	CNS 3765 (2005) IEC 60335-2-24 (2005) CNS 2062 (2000) Section 5.2 & 5.3 & 5.10 & 7 CNS 13783-1 (2004)	√	IEC 60335-1 IEC 60335-2-24 (2005) Nil CISPR 14-1	MOD IDT NEQ IDT
8418.21.90.00.6A Other compression-type household refrigerators. (inspection scope: only below 300V, single phase, AC and total capacity not exceeding 700L)	ditto	CNS 3765 (2005) IEC 60335-2-24 (2005) CNS 2062 (2000) Section 5.2 & 5.3 & 5.10 & 7 CNS 13783-1 (2004)	√	IEC 60335-1 IEC 60335-2-24 (2005) Nil CISPR 14-1	MOD IDT NEQ IDT
8418.21.90.00.6B Other compression-type household	ditto	CNS 13783-1 (2004) CNS 3765 (2005) IEC 60335-2-24 (2005)	√	CISPR 14-1 IEC 60335-1 IEC 60335-2-24 (2005)	IDT MOD IDT

Product type or grouping (Electrical products classified by C.C.C. Code)	Regulations	Standards			
		Domestic Standards	Please tick box if mandatory	Relevant International Standards	Extent of Alignment
refrigerators (inspection scope: only coolers below 300V, total capacity not exceeding 100 L)					
8418.29.20.00.3 Refrigerators, household type, absorption-type, electrical (inspection scope: only below 300V, AC, single phase, total capacity not exceeding 700L)	ditto	CNS 13783-1 (2004) CNS 3765 (2005) IEC 60335-2-24 (2005)	√	CISPR 14-1 IEC 60335-1 IEC 60335-2-24 (2005)	IDT MOD IDT
8418.29.99.00.9 Other refrigerators, household type, (inspection scope: only below 300V, AC, single phase, total capacity not exceeding 700L)	ditto	CNS 3765 (2005) IEC 60335-2-24 (2005) CNS 2062 (2000) Section 5.2 & 5.3 & 5.10 & 7 CNS 13783-1 (2004)	√	IEC 60335-1 IEC 60335-2-24 (2005) Nil CISPR 14-1	MOD IDT NEQ IDT
8418.40.90.00.3 Other freezers of the upright type, not exceeding 900L capacity. (inspection scope: only below 300V, AC, Single phase, total capacity not exceeding 400 L)	ditto	CNS 3765 (2005) IEC 60335-2-24 (2005) CNS 2062 (2000) Section 5.2 & 5.3 & 5.10 & 7 CNS 13783-1 (2004)	√	IEC 60335-1 IEC 60335-2-24 (2005) Nil CISPR 14-1	MOD IDT NEQ IDT
8418.50.90.00.0 Other furniture (chests, cabinets, display counters, show-cases and the like) for storage and display, incorporating refrigerating or freezing equipment (inspection scope: only coolers below 300V,	ditto	CNS 13783-1 (2004) CNS 3765 (2005) IEC 60335-2-24 (2005)	√	CISPR 14-1 IEC 60335-1 IEC 60335-2-24 (2005)	IDT MOD IDT

Product type or grouping (Electrical products classified by C.C.C. Code)	Regulations	Standards			
		Domestic Standards	Please tick box if mandatory	Relevant International Standards	Extent of Alignment
total capacity not exceeding 100 L)					
8418.69.90.00.9A Other refrigerating or freezing equipment (inspection scope: drinking water supplier with cooling device, not exceeding 300V AC, single phase)	ditto	CNS 3765 (2005) IEC 60335-2-15 (2005) CNS 3910 (2000) Section 1.3 CNS 13783-1 (2004)	√	IEC 60335-1 IEC 60335-2-15 (2005) Nil CISPR 14-1	IDT MOD NEQ IDT
8418.69.90.00.9B Other refrigerating or freezing equipment (inspection scope: water dispenser with cooling device, not exceeding 300V AC, single phase)	ditto	CNS 3765 (2005) IEC 60335-2-15 (2005) CNS 13516 (1999) Section 4.10 & 4.14 & 5.1.9 CNS 13783-1 (2004)	√	IEC 60335-1 IEC 60335-2-15 (2005) Nil CISPR 14-1	MOD IDT NEQ IDT
8418.69.90.00.9C Other refrigerators or freezers (inspection scope: only coolers below 300V, capacity not exceeding 100 L)	ditto	CNS 13783-1 (2004) CNS 3765 (2005) IEC 60335-2-24 (2005)	√	CISPR 14-1 IEC 60335-1 IEC 60335-2-24 (2005)	IDT MOD IDT
8419.81.00.00.1 Coffee makers (inspection scope: only single phase not exceeding 300V, 3kW)	ditto	CNS 3765 (2005) IEC 60335-2-15 (2005) IEC 60335-2-14 (2002) CNS 13783-1 (2004)	√	IEC 60335-1 IEC 60335-2-15 (2005) IEC 60335-2-14 (2002) CISPR 14-1	MOD IDT IDT IDT
8421.12.00.00.1 Clothes-dryers (inspection scope: only below 300V AC, single phase)	ditto	CNS 3765 (2005) IEC 60335-2-4 (2005) CNS 13783-1 (2004)	√	IEC 60335-1 IEC 60335-2-4 (2005) CISPR 14-1	MOD IDT IDT

Product type or grouping (Electrical products classified by C.C.C. Code)	Regulations	Standards			
		Domestic Standards	Please tick box if mandatory	Relevant International Standards	Extent of Alignment
8421.39.10.00.8 Electric air filters and purifiers (inspection scope: air cleaners which only below 300V, other than the medical devices specified by the Pharmaceutical Affairs Act)	ditto	CNS 13783-1 (2004) CNS 3765 (2005) IEC 60335-2-65 (2005-09)	√	CISPR 14-1 IEC 60335-1 IEC 60335-2-65 (2005-09)	MOD IDT IDT
8422.11.00.00.1 Dish washers (inspection scope: only below 1kW, 300V, single phase, AC)	ditto	CNS 3765 (2005) IEC 60335-2-5 (2005) CNS 13783-1 (2004)	√	IEC 60335-1 IEC60335-2-5 (2005) CISPR14-1	MOD IDT IDT
8422.19.00.00.3 Other dish washers (inspection scope: only below 1kW, 300V, single phase, AC)	ditto	CNS 3765 (2005) IEC 60335-2-5 (2005) CNS 13783-1 (2004)	√	IEC 60335-1 IEC 60335-2-5 (2004) CISPR 14-1	MOD IDT IDT
8450.11.10.00.4 Fully-automatic washing machines, including machines which both wash and dry, each of a dry linen capacity of more than 8Kg to 10Kg. (inspection scope: only below 300V AC, single phase)	ditto	CNS 3765 (2005) IEC 60335-2-7 (2004) CNS 13783-1 (2004)	√	IEC 60335-1 IEC 60335-2-7 (2004) CISPR 14-1	MOD IDT IDT
8450.11.20.00.2 Fully-automatic washing machines, including machines which both wash and dry, each of a dry linen capacity of 6Kg and over, but less	ditto	CNS 3765 (2005) IEC 60335-2-7 (2004) CNS 13783-1 (2004)	√	IEC60335-1 IEC60335-2-7 (2004) CISPR14-1	MOD IDT IDT

Product type or grouping (Electrical products classified by C.C.C. Code)	Regulations	Standards			
		Domestic Standards	Please tick box if mandatory	Relevant International Standards	Extent of Alignment
than 8Kg(inspection scope: only below 300V AC, single phase)					
8450.11.30.00.0 Fully-automatic washing machines, including machines which both wash and dry, each of a dry linen capacity less than 6Kg. (inspection scope: only below 300V AC, single phase)	ditto	CNS 3765 (2005) IEC 60335-2-7 (2004) CNS 13783-1 (2004)	√	IEC60335-1 IEC60335-2-7 (2004) CISPR14-1	MOD IDT IDT
8450.12.10.00.3 Other washing machines, with built-in centrifugal drier, each of a dry linen capacity of 8Kg to 10 Kg. (inspection scope: only below 300V AC, single phase)	ditto	CNS 3765 (2005) IEC 60335-2-7 (2004) CNS 13783-1 (2004)	√	IEC60335-1 IEC60335-2-7 (2004) CISPR14-1	MOD IDT IDT
8450.12.20.00.1 Other washing machines, with built-in centrifugal drier, each of a dry linen capacity of 6Kg and over, but less than 8Kg. (inspection scope: only below 300V AC, single phase)	ditto	CNS 3765 (2005) IEC 60335-2-7 (2004) CNS 13783-1 (2004)	√	IEC60335-1 IEC60335-2-7 (2004) CISPR14-1	MOD IDT IDT
8450.12.30.00.9 Other washing machines, with built-in centrifugal drier, each of a dry linen capacity less than 6Kg(inspection scope: only below	ditto	CNS 3765 (2005) IEC 60335-2-7 (2004) CNS 13783-1 (2004)	√	IEC60335-1 IEC60335-2-7 (2004) CISPR14-1	MOD IDT IDT

Product type or grouping (Electrical products classified by C.C.C. Code)	Regulations	Standards			
		Domestic Standards	Please tick box if mandatory	Relevant International Standards	Extent of Alignment
300V AC, single phase)					
8450.19.10.00.6 Other washing machines, each of a dry linen capacity of 8Kg to 10 Kg. (inspection scope: only below 300V AC, single phase)	ditto	CNS 3765 (2005) IEC 60335-2-7 (2004) CNS 13783-1 (2004)	√	IEC60335-1 IEC60335-2-7 (2004) CISPR14-1	MOD IDT IDT
8450.19.20.00.4 Other washing machines, each of a dry linen capacity of 6Kg and over but less than 8Kg. (inspection scope: only below 300V AC, single phase)	ditto	CNS 3765 (2005) IEC 60335-2-7 (2004) CNS 13783-1 (2004)	√	IEC60335-1 IEC60335-2-7 (2004) CISPR14-1	MOD IDT IDT
8450.19.30.00.2 Other washing machines, each of a dry linen capacity less than 6Kg(inspection scope: only below 300V AC, single phase)	ditto	CNS 3765 (2005) IEC 60335-2-7 (2004) CNS 13783-1 (2004)	√	IEC60335-1 IEC60335-2-7 (2004) CISPR14-1	MOD IDT IDT
8450.20.00.00.5 Washing machines, including machines which both wash and dry, each of a dry linen capacity exceeding 10Kg. (inspection scope: only below 300V AC, single phase)	ditto	CNS 3765 (2005) IEC 60335-2-7 (2004) CNS 13783-1 (2004)	√	IEC60335-1 IEC60335-2-7 (2004) CISPR14-1	MOD IDT IDT
8451.21.10.00.1 Drying machines, each of a dry linen capacity of 8Kg to 10 Kg.	ditto	CNS 3765 (2005) IEC 60335-2-11 (2002)+A1 IEC 60335-2-43 (2002)	√	IEC60335-1 IEC 60335-2-11 (2002)+A1 IEC 60335-2-43 (2002)	MOD IDT IDT

Product type or grouping (Electrical products classified by C.C.C. Code)	Regulations	Standards			
		Domestic Standards	Please tick box if mandatory	Relevant International Standards	Extent of Alignment
(inspection scope: only below 300V AC, single phase)		CNS 13783-1 (2004)		CISPR14-1	IDT
8451.21.20.00.9 Drying machines, each of a dry linen capacity less than 6Kg (dry weight) and over, but less than 8Kg. (inspection scope: only below 300V AC, single phase)	ditto	CNS 3765 (2005) IEC 60335-2-11 (2002)+A1 IEC 60335-2-43 (2002) CNS 13783-1 (2004)	√	IEC60335-1 IEC 60335-2-11 (2002)+A1 IEC 60335-2-43 (2002) CISPR14-1	MOD IDT IDT IDT
8451.21.30.00.7 Drying machines, each of a dry linen capacity less than 6Kg. (inspection scope: only below 300V AC, single phase)	ditto	CNS 3765 (2005) IEC 60335-2-11 (2002)+A1 IEC 60335-2-43 (2002) CNS 13783-1 (2004)	√	IEC60335-1 IEC 60335-2-11 (2002)+A1 IEC 60335-2-43 (2002) CISPR14-1	MOD IDT IDT IDT
8451.29.00.00.5 Drying machines, each of a dry linen capacity exceeding 10Kg. (inspection scope: only below 300V AC, single phase)	ditto	CNS 3765 (2005) IEC 60335-2-11 (2002)+A1 IEC 60335-2-43 (2002) CNS 13783-1 (2004)	√	IEC60335-1 IEC 60335-2-11 (2002)+A1 IEC 60335-2-43 (2002) CISPR14-1	MOD IDT IDT IDT
8472.90.30.00.8 Pencil-sharpening machines (inspection scope: only single phase not exceeding 300V, excluding rechargeable type)	ditto	CNS 14336-1 (2010) CNS 13783-1 (2004)	√	IEC 60950 CISPR14-1	MOD IDT
8479.60.00.00.3 Cooling fan (inspection scope: only water-cooling or	ditto	CNS 3765 (2005) IEC 60335-2-80 (2004) IEC 60335-2-30 (2004)	√	IEC 60335-1 IEC 60335-2-80 (2004) IEC 60335-2-30 (2004)	MOD IDT IDT

Product type or grouping (Electrical products classified by C.C.C. Code)	Regulations	Standards			
		Domestic Standards	Please tick box if mandatory	Relevant International Standards	Extent of Alignment
water-cooling-and-warming fan, single phase not exceeding 300V, rated power 500W and under without heater: 2kW and under with heater)		CNS 13783-1 (2004)		CISPR14-1	IDT
8479.89.10.00.8A Cooling fan (inspection scope: only water-cooling or water-cooling-and-warming fan, single phase not exceeding 300V, rated power 500W and under without heater: 2kW and under with heater)	ditto	CNS 3765 (2005) IEC 60335-2-80 (2004) IEC 60335-2-30 (2004) CNS 13783-1 (2004)	√	IEC 60335-1 IEC 60335-2-80 (2004) IEC 60335-2-30 (2004) CISPR14-1	MOD IDT IDT IDT
8479.89.10.00.8B De-humidifier (inspection scope: single phase, below 300V, not exceeding 1000W, compression-type)	ditto	CNS 3765 (2005) IEC 60335-2-40 (2005) CNS 12492 (2010) CNS 13783-1 (2004)	√	IEC 60335-1 IEC 60335-2-40 (2005) Nil CISPR14-1	MOD IDT NEQ IDT
8501.40.10.00.8 Other explosion proof AC motors, single-phase (inspection scope: only below 22.5kW and without other device)	ditto	CNS 1057 (2001) CNS 3618 (1992) Applicable series standards for CNS 3376 Applicable series standards for IEC 60079	√	Nil Nil Nil IEC 60079	NEQ NEQ NEQ IDT
8501.40.90.00.1 Other AC motors, single-phase (without other device)	ditto	CNS 1057 (2001) CNS 3618 (1992)	√	Nil Nil	NEQ NEQ

Product type or grouping (Electrical products classified by C.C.C. Code)	Regulations	Standards			
		Domestic Standards	Please tick box if mandatory	Relevant International Standards	Extent of Alignment
8501.51.10.00.4 Explosion proof AC motors, multi-phase, of an output exceeding 37.5W but not exceeding 750W, without other device	ditto	CNS 1056 (1999) CNS 14400 (2003) Applicable series standards for CNS 3376 Applicable series standards for IEC 60079	√	Nil Nil Nil IEC 60079	NEQ NEQ NEQ IDT
8501.51.90.00.7 Low-voltage three-phase induction motors. (inspection scope: only those rated output below 74.6kW (100HP) without other additional device and exclude those used in household appliances)	ditto	CNS 1056 (2011) CNS 14400 (2012)	√	Nil Nil	NEQ NEQ
8501.52.10.00.3 Explosion proof AC motors, multi-phase, of an output exceeding 750W but not exceeding 75kW (inspection scope: only below 22.5kW and without other device)	ditto	CNS 1056 (1999) CNS 14400 (2003) Applicable series standards for CNS 3376 Applicable series standards for IEC 60079	√	Nil Nil Nil IEC 60079	NEQ NEQ NEQ IDT
8501.52.90.00.6 Low-voltage three-phase induction motors. (inspection scope: only those rated output below 74.6kW (100HP) without other additional device and exclude those used in household appliances)	ditto	CNS 1056 (2011) CNS 14400 (2012)	√	Nil Nil	NEQ NEQ

Product type or grouping (Electrical products classified by C.C.C. Code)	Regulations	Standards			
		Domestic Standards	Please tick box if mandatory	Relevant International Standards	Extent of Alignment
8504.10.00.00.3A Ballasts for discharge lamps or tubes (inspection scope: only AC supplied electronic ballasts for fluorescent lamp)	ditto	CNS 13755 (2006) IEC 61347-1 (2003) IEC 61347-2-3 (2004)+A1, A2	√	Nil IEC 61347-1 (2003) IEC 61347-2-3 (2004)+A1, A2	NEQ IDT IDT
8504.10.00.00.3B Ballasts for discharge lamps or tubes (inspection scope: only ballasts for preheat type hot cathode fluorescent lamp)	ditto	CNS 927 (2006) IEC 61347-1 (2003) IEC 61347-2-8 (2006)	√	Nil IEC 61347-1 (2003) IEC 61347-2-8 (2006)	NEQ IDT IDT
8508.11.00.00.8 Vacuum cleaners, of a power not exceeding 1,500 W and having a dust bag or other receptacle capacity not exceeding 20 L (inspection scope: below 300V ,AC, single phase; excluding rechargeable type)	ditto	CNS 3765 (2005) IEC 60335-2-2 (2004) CNS 13783-1 (2004)	√	IEC 60335-1 IEC 60335-2-2 (2004) CISPR14-1	MOD IDT IDT
8508.19.00.00.0 Other vacuum cleaners, with self-contained electric motor (inspection scope: below 300V ,AC, single phase; excluding rechargeable type)	ditto	CNS 3765 (2005) IEC 60335-2-2 (2004) CNS 13783-1 (2004)	√	IEC 60335-1 IEC 60335-2-2 (2004) CISPR14-1	MOD IDT IDT
8508.60.00.00.8 Other vacuum cleaners (inspection	ditto	CNS 3765 (2005) IEC 60335-2-2 (2004)	√	IEC 60335-1 IEC 60335-2-2 (2004)	MOD IDT

Product type or grouping (Electrical products classified by C.C.C. Code)	Regulations	Standards			
		Domestic Standards	Please tick box if mandatory	Relevant International Standards	Extent of Alignment
scope: below 300V ,AC, single phase; excluding rechargeable type)		CNS 13783-1 (2004)		CISPR14-1	IDT
8509.40.00.00.2A Electric food grinders for domestic use (inspection scope: only below 300V AC, single phase)	ditto	CNS 3765 (2005) IEC 60335-2-14 (2002) CNS 13783-1 (2004)	√	IEC 60335-1 IEC 60335-2-14 (2002) CISPR14-1	MOD IDT IDT
8516.79.00.00.7Y Electric food grinders for domestic use (inspection scope: only below 300V AC, single phase)	ditto	CNS 3765 (2005) IEC 60335-2-14 (2002) CNS 13783-1 (2004)	√	IEC 60335-1 IEC 60335-2-14 (2002) CISPR14-1	MOD IDT IDT
8509.40.00.00.2B Electric food mixers for domestic use (including electric fruit grinder and meat grinder) (inspection scope: only below 300V AC, single phase)	ditto	CNS 3765 (2005) IEC 60335-2-14 (2002) CNS 13783-1 (2004)	√	IEC 60335-1 IEC 60335-2-14 (2002) CISPR14-1	MOD IDT IDT
8509.40.00.00.2C Electric juice extractors for domestic use(inspection scope: only below 300V AC, single phase)	ditto	CNS 3765 (2005) IEC 60335-2-14 (2002) CNS 13783-1 (2004)	√	IEC 60335-1 IEC 60335-2-14 (2002) CISPR14-1	MOD IDT IDT
8509.40.00.00.2D Coffee bean grinder (inspection scope: only below 300V, AC, single phase; excluding rechargeable	ditto	CNS 3765 (2005) IEC 60335-2-14 (2002) CNS 13783-1 (2004)		IEC 60335-1 IEC 60335-2-14 (2002) CISPR14-1	MOD IDT IDT

Product type or grouping (Electrical products classified by C.C.C. Code)	Regulations	Standards			
		Domestic Standards	Please tick box if mandatory	Relevant International Standards	Extent of Alignment
type)					
8509.40.00.00.2E Peeling ice machine (inspection scope: only below 300V, AC, single phase; excluding battery type)	ditto	CNS 3765 (2005) IEC 60335-2-14 (2002) CNS 13783-1 (2004)	√	IEC 60335-1 IEC 60335-2-14 (2002) CISPR14-1	MOD IDT IDT
8509.80.30.00.7 Electric floor polishers for domestic use (inspection scope: below 300V ,AC, single phase; excluding rechargeable type)	ditto	CNS 3765 (2005) IEC 60335-2-10 (2002) CNS 13783-1 (2004)	√	IEC 60335-1 IEC 60335-2-10 (2002) CISPR14-1	MOD IDT IDT
8509.80.90.00.4A Electric insect killers (inspection scope: only below 300V AC, single phase)	ditto	CNS 3765 (2005) IEC 60335-2-59 (2002) CNS 13783-1 (2004)	√	IEC 60335-1 IEC 60335-2-59 (2002) CISPR14-1	MOD IDT IDT
8509.80.90.00.4B Peeling ice machine (inspection scope: only below 300V, AC, single phase; excluding rechargeable type)	ditto	CNS 3765 (2005) IEC 60335-2-14 (2002) CNS 13783-1 (2004)	√	IEC 60335-1 IEC 60335-2-14 (2002) CISPR14-1	MOD IDT IDT
8509.80.90.00.4D De-humidifier (inspection scope: single phase, below 300V, not exceeding 1000W, compression-type)	ditto	CNS 3765 (2005) IEC 60335-2-40 (2005) CNS 12492 (2010) CNS 13783-1 (2004)	√	IEC 60335-1 IEC 60335-2-40 (2005) Nil CISPR14-1	MOD IDT NEQ IDT
8509.80.90.00.4E	ditto	CNS 3765 (2005)	√	IEC 60335-1	MOD

Product type or grouping (Electrical products classified by C.C.C. Code)	Regulations	Standards			
		Domestic Standards	Please tick box if mandatory	Relevant International Standards	Extent of Alignment
Cooling fan (inspection scope: only water-cooling or water-cooling-and-warming fan, single phase not exceeding 300V, rated power 500W and under without heater: 2kW and under with heater)		IEC 60335-2-80 (2004) IEC 60335-2-30 (2004) CNS 13783-1 (2004)		IEC 60335-2-80 (2004) IEC 60335-2-30 (2004) CISPR14-1	IDT IDT IDT
8510.10.00.00.5 Shavers (inspection scope: only below 300V, AC, single phase; excluding rechargeable type)	ditto	CNS 3765 (2005) IEC 60335-2-8 (2005) CNS 13783-1 (2004)	√	IEC 60335-1 IEC 60335-2-8 (2005) CISPR14-1	MOD IDT IDT
8510.20.00.00.3 Hair clippers (inspection scope: only below 300V, AC, single phase; excluding rechargeable type)	ditto	CNS 3765 (2005) IEC 60335-2-8 (2005) CNS 13783-1 (2004)	√	IEC 60335-1 IEC 60335-2-8 (2005) CISPR14-1	MOD IDT IDT
8516.10.00.00.9A Electric instantaneous water heaters (inspection scope: only below 300V AC, single phase)	ditto	CNS 3765 (2005) IEC 60335-2-35 (2002) CNS 13783-1 (2004)	√	IEC 60335-1 IEC 60335-2-35 (2002) CISPR14-1	MOD IDT IDT
8516.10.00.00.9B Storage water heaters (inspection scope: only below 300V AC, single phase)	ditto	CNS 3765 (2005) IEC 60335-2-21 (2004) CNS 13783-1 (2004) CNS 11010 (2013) Section 8.11 & 8.14 (the value of Est,24 must meet the requirements of Minimum	√	IEC 60335-1 IEC 60335-2-21 (2004) CISPR14-1 Nil	MOD IDT IDT NEQ

Product type or grouping (Electrical products classified by C.C.C. Code)	Regulations	Standards			
		Domestic Standards	Please tick box if mandatory	Relevant International Standards	Extent of Alignment
		Energy Performance Standard (MEPS) of the Electric Storage Water Heater)			
8516.10.00.00.9C Electric storage drink water heaters (inspection scope: only not exceeding 250V 60A 500L)	ditto	CNS 3765 (2005) IEC 60335-2-15 (2005) CNS 13783-1 (2004)	√	IEC 60335-1 IEC 60335-2-15 (2005) CISPR14-1	MOD IDT IDT
8516.10.00.00.9D Drinking water supplier (inspection scope: without cooling device, only below 300V AC, single phase)	ditto	CNS 3765 (2005) IEC 60335-2-15 (2005) CNS 3910 (2000) Section 1.3 CNS 13783-1 (2004)	√	IEC 60335-1 IEC 60335-2-15 (2005) Nil CISPR 14-1	IDT MOD NEQ IDT
8516.10.00.00.9E Water dispenser (inspection scope: without cooling device, only below 300V AC, single phase)	ditto	CNS 3765 (2005) IEC 60335-2-15 (2005) CNS 13516 (1999) Section 4.10 & 4.14 & 5.1.9 CNS 13783-1 (2004)	√	IEC 60335-1 IEC 60335-2-15 (2005) Nil CISPR 14-1	IDT MOD NEQ IDT
8516.10.00.00.9F Immersion heaters (inspection scope: only below 300V)	ditto	CNS 13783-1 (2004) CNS 3765 (2005) IEC 60335-2-74 (2003-03)+am1 (2006-04)	√	IEC 60335-1 CISPR14-1 IEC 60335-2-74 (2003-03)+am1 (2006-04)	MOD IDT IDT
8516.21.00.00.6 Storage heating radiators (inspection scope: only below 300V AC, single phase)	ditto	CNS 3765 (2005) IEC 60335-2-30 (2004) IEC 60335-2-61 (2005) CNS 13783-1 (2004)	√	IEC 60335-1 IEC 60335-2-30 (2004) IEC 60335-2-61 (2005) CISPR 14-1	MOD IDT IDT IDT
8516.29.90.10.7	ditto	CNS 3765 (2005)	√	IEC 60335-1	MOD

Product type or grouping (Electrical products classified by C.C.C. Code)	Regulations	Standards			
		Domestic Standards	Please tick box if mandatory	Relevant International Standards	Extent of Alignment
Electric vane oil-filled radiator (inspection scope: only below 300V AC, single phase)		IEC 60335-2-30 (2004) IEC 60335-2-61 (2005) CNS 13783-1 (2004)		IEC 60335-2-30 (2004) IEC 60335-2-61 (2005) CISPR 14-1	IDT IDT IDT
8516.29.90.90.0A Other electric space heating apparatus (inspection scope: only below 300V AC, single phase)	ditto	CNS 3765 (2005) IEC 60335-2-30 (2004) IEC 60335-2-61 (2005) CNS 13783-1 (2004)	√	IEC 60335-1 IEC 60335-2-30 (2004) IEC 60335-2-61 (2005) CISPR 14-1	MOD IDT IDT IDT
8516.29.90.90.0B Body warmer for personal use (inspection scope: not exceeding 300V)	ditto	CNS 13783-1 (2004) CNS 3765 (2005) IEC 60335-2-81 (2002) IEC 60335-2-17 (2002) IEC 60335-2-23 (2003)	√	IEC 60335-1 CISPR 14-1 IEC 60335-2-81 (2002) IEC 60335-2-17 (2002) IEC 60335-2-23 (2003)	MOD IDT IDT IDT IDT
8516.31.00.00.4 Hair dryers (inspection scope: only hand-held type, below 300V AC, single phase))	ditto	CNS 3765 (2005) IEC 60335-2-23 (2003) CNS 13783-1 (2004)	√	IEC 60335-1 IEC 60335-2-23 (2003) CISPR 14-1	MOD IDT IDT
8516.32.00.00.3A Other hair-dressing apparatus (inspection scope: only electric hair-brush, below 300V AC, single phase)	ditto	CNS 3765 (2005) IEC 60335-2-23 (2003) CNS 13783-1 (2004)	√	IEC 60335-1 IEC 60335-2-23 (2003) CISPR 14-1	MOD IDT IDT
8516.32.00.00.3B Permanent-wave appliances	ditto	CNS 3765 (2005) IEC 60335-2-23 (2003) CNS 13783-1 (2004)	√	IEC 60335-1 IEC 60335-2-23 (2003) CISPR 14-1	MOD IDT IDT
8516.33.00.00.2	ditto	CNS 3765 (2005)	√	IEC 60335-1	MOD

Product type or grouping (Electrical products classified by C.C.C. Code)	Regulations	Standards			
		Domestic Standards	Please tick box if mandatory	Relevant International Standards	Extent of Alignment
Hand dryers (inspection scope: only below 300V AC, single phase)		IEC 60335-2-23 (2003) CNS 13783-1 (2004)		IEC 60335-2-23 (2003) CISPR 14-1	IDT IDT
8516.40.00.00.3A Electric iron (inspection scope: only below 300V AC, single phase)	ditto	CNS 3765 (2005) IEC 60335-2-3 (2005) CNS 13783-1 (2004)	√	IEC 60335-1 IEC 60335-2-3 (2005) CISPR 14-1	MOD IDT IDT
8516.40.00.00.3B Steam electric iron only below 300V AC, single phase	ditto	CNS 3765 (2005) IEC 60335-2-3 (2005) CNS 13783-1 (2004)	√	IEC 60335-1 IEC 60335-2-3 (2005) CISPR 14-1	MOD IDT IDT
8516.50.00.00.0 Microwave oven (inspection scope: only below 300V AC, single phase)	ditto	CNS 3765 (2005) IEC 60335-2-25 (2005) CNS 13803 (2003)	√	IEC 60335-1 IEC 60335-2-3 (2005) CISPR 11	MOD IDT IDT
8516.60.10.00.6 Electric oven (inspection scope: only below 300V AC, single phase)	ditto	CNS 3765 (2005) IEC 60335-2-6 (2005) IEC 60335-2-9 (2004) CNS 13783-1 (2004)	√	IEC 60335-1 IEC 60335-2-6 (2005) IEC 60335-2-9 (2004) CISPR 14-1	MOD IDT IDT IDT
8516.60.20.00.4 Electric cookers (inspection scope: only below 300V AC, single phase)	ditto	CNS 3765 (2005) IEC 60335-2-13 (2004) IEC 60335-2-15 (2005) CNS 13783-1 (2004)	√	IEC 60335-1 IEC 60335-2-13 (2004) IEC 60335-2-15 (2005) CISPR 14-1	MOD IDT IDT IDT
8516.60.30.00.2 Electric magnetic cooker (inspection scope: only below 300V AC, single phase)	ditto	CNS 3765 (2005) IEC 60335-2-6 (2005) IEC 60335-2-9 (2004) CNS 13803 (2003)	√	IEC 60335-1 IEC 60335-2-6 (2005) IEC 60335-2-9 (2004) CISPR 14-1	MOD IDT IDT IDT
8516.60.90.00.9A	ditto	CNS 3765 (2005)	√	IEC 60335-1	MOD

Product type or grouping (Electrical products classified by C.C.C. Code)	Regulations	Standards			
		Domestic Standards	Please tick box if mandatory	Relevant International Standards	Extent of Alignment
Other ovens; cookers, cooking plates, boiling rings, grillers and roasters (inspection scope: only grill roasters, electric plates, grills, roasters, electric cooking plates, below 300V AC, single phase)		IEC 60335-2-6 (2005) IEC 60335-2-9 (2004) CNS 13783-1 (2004)		IEC 60335-2-6 (2005) IEC 60335-2-9 (2004) CISPR 14-1	IDT IDT IDT
8516.60.90.00.9B Electric cookers (inspection scope: only below 300V AC, single phase)	ditto	CNS 3765 (2005) IEC 60335-2-13 (2004) IEC 60335-2-15 (2005) CNS 13783-1 (2004)	√	IEC 60335-1 IEC 60335-2-13 (2004) IEC 60335-2-15 (2005) CISPR 14-1	MOD IDT IDT IDT
8516.60.90.00.9C Electric steamer (inspection scope: only single phase not exceeding 300V 1kW)	ditto	CNS 3765 (2005) IEC 60335-2-15 (2005) IEC 60335-2-6 (2005) CNS 13783-1 (2004)	√	IEC 60335-1 IEC 60335-2-15 (2005) IEC 60335-2-6 (2005) CISPR 14-1	MOD IDT IDT IDT
8516.71.00.00.5A Electric pots (inspection scope: only below 300V AC, single phase)	ditto	CNS 3765 (2005) IEC 60335-2-15 (2005) CNS 12625 (2012) Section 5.4, 5.7 & 11 CNS 13783-1 (2004)	√	IEC 60335-1 IEC 60335-2-15 (2005) Nil CISPR 14-1	MOD IDT NEQ IDT
8516.71.00.00.5B Electric percolators (electric coffee pots) (inspection scope: only below 300V AC, single phase, not exceeding 3kW)	ditto	CNS 3765 (2005) IEC 60335-2-15 (2005) CNS 13783-1 (2004)	√	IEC 60335-1 IEC 60335-2-15 (2005) CISPR 14-1	MOD IDT IDT

Product type or grouping (Electrical products classified by C.C.C. Code)	Regulations	Standards			
		Domestic Standards	Please tick box if mandatory	Relevant International Standards	Extent of Alignment
8516.71.00.00.5C Coffee makers (inspection scope: only single phase not exceeding 300V, 3kW)	ditto	CNS 3765 (2005) IEC 60335-2-15 (2005) IEC 60335-2-14 (2002) CNS 13783-1 (2004)	√	IEC 60335-1 IEC 60335-2-15 (2005) IEC 60335-2-14 (2002) CISPR 14-1	MOD IDT IDT IDT
8516.72.00.00.4 Toaster (inspection scope: only below 300V AC, single phase)	ditto	CNS 3765 (2005) IEC 60335-2-9 (2004) CNS 13783-1 (2004)	√	IEC 60335-1 IEC 60335-2-9 (2004) CISPR 14-1	MOD IDT IDT
8516.79.00.00.7A Electric plates (inspection scope: only below 300V AC, single phase)	ditto	CNS 3765 (2005) IEC 60335-2-6 (2005) IEC60335-2-9 (2004) CNS 13783-1 (2004)	√	IEC 60335-1 IEC 60335-2-6 (2005) IEC 60335-2-9 (2004) CISPR 14-1	MOD IDT IDT IDT
8516.79.00.00.7B Grill, roasters (inspection scope: only below 300V AC, single phase)	ditto	CNS 3765 (2005) IEC 60335-2-9 (2004) CNS 13783-1 (2004)	√	IEC 60335-1 IEC 60335-2-9 (2004) CISPR 14-1	MOD IDT IDT
8516.79.00.00.7F Grill, roasters (inspection scope: only single phase not exceeding 300V AC, 10kW)	ditto	CNS 3765 (2005) IEC 60335-2-6 (2005) CNS 13783-1 (2004)	√	IEC 60335-1 IEC 60335-2-6 (2005) CISPR 14-1	MOD IDT IDT
8516.79.00.00.7G Dish dryers(inspection scope: only below 300V AC, single phase)	ditto	CNS 3765 (2005) IEC 60335-2-5 (2005) CNS 13783-1 (2004)	√	IEC 60335-1 IEC 60335-2-5 (2005) CISPR 14-1	MOD IDT IDT
8516.79.00.00.7H Electric cooking plates (inspection scope: only single phase not	ditto	CNS 3765 (2005) IEC 60335-2-9 (2004) CNS 13783-1 (2004)	√	IEC 60335-1 IEC 60335-2-9 (2004) CISPR 14-1	MOD IDT IDT

Product type or grouping (Electrical products classified by C.C.C. Code)	Regulations	Standards			
		Domestic Standards	Please tick box if mandatory	Relevant International Standards	Extent of Alignment
exceeding 300V AC, 3kW)					
8516.79.00.00.7J Clothes dryers (inspection scope: only below 300V AC, single phase)	ditto	CNS 3765 (2005) IEC 60335-2-43 (2002) CNS 13783-1 (2004)	√	IEC 60335-1 IEC 60335-2-43 (2002) CISPR 14-1	MOD IDT IDT
8516.79.00.00.7K Electric fish pool heaters (inspection scope: only single phase not exceeding 300 V AC, 1kW)	ditto	CNS 3765 (2005) IEC 60335-2-55 (2002) CNS 13783-1 (2004)	√	IEC 60335-1 IEC 60335-2-55 (2002) CISPR 14-1	MOD IDT IDT
8516.79.00.00.7L Electric plate warmer (inspection scope: only single phase not exceeding 300 V AC, 1kW)	ditto	CNS 3765 (2005) IEC 60335-2-12 (2002) CNS 13783-1 (2004)	√	IEC 60335-1 IEC 60335-2-12 (2002) CISPR 14-1	MOD IDT IDT
8516.79.00.00.7M Electric insecticide fumigators (inspection scope: only below 300V AC, single phase)	ditto	CNS 3765 (2005) CNS 13783-1 (2004)	√	IEC 60335-1 CISPR 14-1	MOD IDT
8516.79.00.00.7N Electric incense apparatus (inspection scope: only single phase not exceeding 300V)	ditto	CNS 3765 (2005) CNS 13783-1 (2004)	√	IEC 60335-1 CISPR 14-1	MOD IDT
8516.79.00.00.7O Electric meal box heaters (inspection scope: only single phase not exceeding 300V 1kW)	ditto	CNS 3765 (2005) IEC 60335-2-6 (2005) CNS 13783-1 (2004)	√	IEC 60335-1 IEC 60335-2-6 (2005) CISPR 14-1	MOD IDT IDT

Product type or grouping (Electrical products classified by C.C.C. Code)	Regulations	Standards			
		Domestic Standards	Please tick box if mandatory	Relevant International Standards	Extent of Alignment
8516.79.00.00.7P Electric steamer (inspection scope: only single phase not exceeding 300V 1kW)	ditto	CNS 3765 (2005) IEC 60335-2-15 (2005) IEC 60335-2-6 (2005) CNS 13783-1 (2004)	√	IEC 60335-1 IEC 60335-2-15 (2005) IEC 60335-2-6 (2005) CISPR 14-1	MOD IDT IDT IDT
8516.79.00.00.7Q Electric warming cookers (inspection scope: only single phase not exceeding 300V 1kW)	ditto	CNS 3765 (2005) IEC 60335-2-15 (2005) CNS 13783-1 (2004)	√	IEC 60335-1 IEC 60335-2-15 (2005) CISPR 14-1	MOD IDT IDT
8516.79.00.00.7R Electric warming cabinets (inspection scope: only single phase not exceeding 300V 1kW)	ditto	CNS 3765 (2005) IEC 60335-2-9 (2004) IEC 60335-2-6 (2005) CNS 13783-1 (2004)	√	IEC 60335-1 IEC 60335-2-9 (2004) IEC 60335-2-6 (2005) CISPR 14-1	MOD IDT IDT IDT
8516.79.00.00.7S Electric warming pots (inspection scope: only single phase not exceeding 300V 1kW)	ditto	CNS 3765 (2005) IEC 60335-2-15 (2005) CNS 13783-1 (2004)	√	IEC 60335-1 IEC 60335-2-15 (2005) CISPR 14-1	MOD IDT IDT
8516.79.00.00.7T Milk bottle heaters (inspection scope: only single phase not exceeding 300V 1kW)	ditto	CNS 3765 (2005) IEC 60335-2-15 (2005) CNS 13783-1 (2004)	√	IEC 60335-1 IEC 60335-2-15 (2005) CISPR 14-1	MOD IDT IDT
8516.79.00.00.7U Boiling egg cooker (inspection scope: only single phase not exceeding 300V 1kW)	ditto	CNS 3765 (2005) IEC 60335-2-15 (2005) CNS 13783-1 (2004)	√	IEC 60335-1 IEC 60335-2-15 (2005) CISPR 14-1	MOD IDT IDT

Product type or grouping (Electrical products classified by C.C.C. Code)	Regulations	Standards			
		Domestic Standards	Please tick box if mandatory	Relevant International Standards	Extent of Alignment
8516.79.00.00.7V Body warmer for personal use (inspection scope: not exceeding 300V)	ditto	CNS 13783-1 (2004) CNS 3765 (2005) IEC 60335-2-81 (2002) IEC 60335-2-17 (2002) IEC 60335-2-23 (2003)	√	CISPR 14-1 IEC 60335-1 IEC 60335-2-81 (2002) IEC 60335-2-17 (2002) IEC 60335-2-23 (2003)	MOD IDT IDT IDT IDT
8516.79.00.00.7W Other electro-thermic appliance (inspection scope: Foot massage appliances not exceeding 300V, other than the medical devices specified by the Pharmaceutical Affairs Act)	ditto	CNS 3765 (2005) IEC 60335-2-32 (2002-10) CNS 13783-1 (2004)	√	IEC 60335-1 IEC 60335-2-32 (2002-10) CISPR 14-1	MOD IDT IDT
8516.79.00.00.7X Other electro-thermic appliances (inspection scope: steam electric iron only below 300V AC, single phase)	ditto	CNS 3765 (2005) IEC 60335-2-3 (2005) CNS 13783-1 (2004)	√	IEC 60335-1 IEC 60335-2-3 (2005) CISPR 14-1	MOD IDT IDT
8531.80.10.00.3 Electric bells (inspection scope: only not exceeding 300V)	ditto	CNS 8799 (1990)	√	Nil	NEQ
8536.20.41.00.4 No fuse breakers, for a voltage not exceeding 1,000 volts and for a current exceeding 600 ampere (inspection scope: only not exceeding 600V, tripping current	ditto	CNS 14816-2 (2004) IEC 60947-2 (2003)	√	Nil IEC 60947-2 (2003)	NEQ IDT

Product type or grouping (Electrical products classified by C.C.C. Code)	Regulations	Standards			
		Domestic Standards	Please tick box if mandatory	Relevant International Standards	Extent of Alignment
not exceeding 800A, interrupting capacity not exceeding 220V/50kA)					
8536.20.49.00.6 Other no fuse breakers, for a voltage not exceeding 1,000 volts (inspection scope: only not exceeding 600V, tripping current not exceeding 800A, interrupting capacity not exceeding 220V/50kA)	ditto	CNS 14816-2 (2004) IEC 60947-2 (2003) IEC 60898 (2003)	√	Nil IEC 60947-2 (2003) IEC 60898 (2003)	NEQ IDT IDT
8536.20.90.00.4 Other automatic circuit breaker, for a voltage not exceeding 1,000 V (inspection scope: only earth leakage circuit breakers not exceeding 600V, rated current not exceeding 225A)	ditto	CNS 5422 (1997) IEC 61008-1 (2002) IEC 61009-1 (2003)	√	Nil IEC 61008-1 (2002) IEC 61009-1 (2003)	NEQ IDT IDT
8536.50.90.00.7A Household switch for fixed wiring (inspection scope: only not exceeding 300V)	ditto	CNS 695 (1987) or IEC 60669-1 (2000)	√	Nil IEC 60669-1 (2000)	NEQ IDT
8536.50.90.00.7B Knife switch (inspection scope: only not exceeding 300V)	ditto	CNS 1488 (1993) CNS 696 (1984)	√	Nil Nil	NEQ NEQ
8536.69.90.00.6A Plugs and socket-outlets for fixed wiring (inspection scope: only not	ditto	CNS 690 (1998) or IEC 60884-1 (2002) + CNS 690 (1998) or	√	Nil IEC 60884-1 (2002) IEC 60884-2-5 (1995)	NEQ IDT IDT

Product type or grouping (Electrical products classified by C.C.C. Code)	Regulations	Standards			
		Domestic Standards	Please tick box if mandatory	Relevant International Standards	Extent of Alignment
exceeding 300V)		IEC 60884-2-5 (1995)			
8536.69.90.00.6B Plugs and socket-outlets for appliances (inspection scope: only not exceeding 300V)	ditto	CNS 6797 (1991) or IEC 60320-1 (2001) + CNS 6797 (1991) or IEC 60320-1 (2001)	√	Nil IEC 60320-1 (2001)	NEQ IDT IDT
8539.10.00.00.2 self-ballasted LED lamps (Inspection scope: those are single phase, not exceeding 300V, exceeding 50V.)	ditto	CNS 15436 (2012) CNS 15630 (2012) CNS 14115 (2009)	√	IEC 15436 Nil CISPR 15	MOD NEQ IDT
8539.31.00.00.7A Fluorescent lamps, hot cathode (inspection scope: only for general lighting purpose, AC, straight and circular tube of pre-heat type and instant starting type)	ditto	CNS 691 (2000)	√	Nil	NEQ
8539.31.00.00.7B Self ballasted Fluorescent lamps	ditto	CNS 14125 (2000)	√	Nil	NEQ
8539.31.00.00.7C Fluorescent lamps, hot cathode (inspection scope: Compact fluorescent lamps)	ditto	CNS 14576 (2007)	√	Nil	NEQ
8539.49.20.00.3 self-ballasted LED lamps	ditto	CNS 15436 (2012) CNS 15630 (2012) CNS 14115 (2009)	√	IEC 15436 Nil CISPR 15	MOD NEQ IDT

Product type or grouping (Electrical products classified by C.C.C. Code)	Regulations	Standards			
		Domestic Standards	Please tick box if mandatory	Relevant International Standards	Extent of Alignment
(Inspection scope: those are single phase, not exceeding 300V, exceeding 50V.)					
8543.70.30.00.7 Ozone generators (inspection scope: air cleaners which only below 300V, other than the medical devices specified by the Pharmaceutical Affairs Act)	ditto	CNS 13783-1 (2004) CNS 3765 (2005) IEC 60335-2-65 (2005-09)	√	CISPR 14-1 IEC 60335-1 IEC 60335-2-65 (2005-09)	IDT MOD IDT
8543.70.99.90.6A Electric insect killers (inspection scope: only below 300V AC, single phase)	ditto	CNS 3765 (2005) IEC 60335-2-59 (2002) CNS 13783-1 (2004)	√	IEC 60335-1 IEC 60335-2-59 (2002) CISPR 14-1	MOD IDT IDT
8544.42.90.90.9 Other electric conductors, fitted with connectors, for a voltage not exceeding 1000 V (inspection scope: only general power supply cords, for a voltage exceeding 80V but not exceeding 300V)	ditto	CNS 10917 (1996) or CNS 10917-1 (1998) or CNS 10917-2 (1996) or CNS 10917-3 (1996) or IEC 60799 (1998)	√	Nil Nil Nil Nil IEC 60799 (1998)	NEQ NEQ NEQ NEQ IDT
8544.49.90.00.1A Other electric conductors, not fitted with connectors, for a voltage not exceeding 1000 V (inspection scope: PVC insulated power cables, for a voltage exceeding	ditto	CNS 3301 (1989) CNS 6556 (1984) or IEC 60227-1 (1993)+A1 (1995) +A2 (1997) or IEC 60227-3 (1993)+A1 (1997) or	√	Nil Nil IEC 60227-1 (1993)+A1 (1995) +A2 (1997) IEC 60227-3 (1993)+A1 (1997)	NEQ NEQ IDT IDT

Product type or grouping (Electrical products classified by C.C.C. Code)	Regulations	Standards			
		Domestic Standards	Please tick box if mandatory	Relevant International Standards	Extent of Alignment
80V)		IEC 60227-4 (1992)+A1 (1997) or IEC 60227-5 (1997)+A1 (1997)+A2 (2003) or IEC 60227-6 (2001) or IEC 60227-7 (1995)+A1 (2003)		IEC 60227-4 (1992)+A1 (1997) IEC 60227-5 (1997)+A1 (1997)+A2 (2003) IEC 60227-6 (2001) IEC 60227-7 (1995)+A1 (2003)	IDT IDT IDT IDT
8544.49.90.00.1B Other electric conductors, not fitted with connectors, for a voltage not exceeding 1000 V (inspection scope: PVC insulated wires, for a voltage exceeding 80V)	ditto	CNS 679 (1998) or IEC 60227-1 (1993)+A1 (1995) +A2 (1997) or IEC 60227-3 (1993)+A1 (1997) or IEC 60227-4 (1992)+A1 (1997) or IEC 60227-5 (1997)+A1 (1997)+A2 (2003) or IEC 60227-6 (2001) or IEC 60227-7 (1995)+A1 (2003)	√	Nil IEC 60227-1 (1993)+A1 (1995) +A2 (1997) IEC 60227-3 (1993)+A1 (1997) IEC 60227-4 (1992)+A1 (1997) IEC 60227-5 (1997)+A1 (1997)+A2 (2003) IEC 60227-6 (2001) IEC 60227-7 (1995)+A1 (2003)	NEQ IDT IDT IDT IDT IDT IDT
8544.49.90.00.1C Other electric conductors, not fitted with connectors, for a voltage not exceeding 1000 V (inspection scope: rubber insulated wires, for a	ditto	CNS 675 (2004) or IEC 60245-1 (2003) or IEC 60245-4 (1994)+A1 (1997)+A2 (2003)	√	Nil IEC 60245-1 (2003) IEC 60245-4 (1994)+A1 (1997)+A2 (2003)	NEQ IDT IDT

Product type or grouping (Electrical products classified by C.C.C. Code)	Regulations	Standards			
		Domestic Standards	Please tick box if mandatory	Relevant International Standards	Extent of Alignment
voltage exceeding 80V)					
8544.49.90.00.1D Other electric conductors, not fitted with connectors, for a voltage not exceeding 1000 V (inspection scope: rubber insulated flexible cords, for a voltage exceeding 80V)	ditto	CNS 546 (2004) or IEC 60245-1 (2003) or IEC 60245-4 (1994)+A1 (1997)+A2 (2003)	√	Nil IEC 60245-1 (2003) IEC 60245-4 (1994)+A1 (1997)+A2 (2003)	NEQ IDT IDT
8544.49.90.00.1E Other electric conductors, not fitted with connectors, for a voltage not exceeding 1000 V (inspection scope: PVC insulated flexible cords, for a voltage exceeding 80V)	ditto	CNS 3199 (1994) or IEC 60227-1 (1993)+A1 (1995) +A2 (1997) or IEC 60227-3 (1993)+A1 (1997) or IEC 60227-4 (1992)+A1 (1997) or IEC 60227-5 (1997)+A1 (1997)+A2 (2003) or IEC 60227-6 (2001) or IEC 60227-7 (1995)+A1 (2003)	√	Nil IEC 60227-1 (1993)+A1 (1995) +A2 (1997) IEC 60227-3 (1993)+A1 (1997) IEC 60227-4 (1992)+A1 (1997) IEC 60227-5 (1997)+A1 (1997)+A2 (2003) IEC 60227-6 (2001) IEC 60227-7 (1995)+A1 (2003)	NEQ IDT IDT IDT IDT IDT IDT
8544.49.90.00.1F Other electric conductors, not fitted with connectors, for a voltage not exceeding 1000 V (inspection scope: rubber insulated wires, for a voltage exceeding 80V)	ditto	CNS 5747 (2004) or IEC 60245-1 (2003) or IEC 60245-4 (1994)+A1 (1997)+A2 (2003)	√	Nil IEC 60245-1 (2003) IEC 60245-4 (1994)+A1 (1997)+A2 (2003)	NEQ IDT IDT

Product type or grouping (Electrical products classified by C.C.C. Code)	Regulations	Standards			
		Domestic Standards	Please tick box if mandatory	Relevant International Standards	Extent of Alignment
8544.49.90.00.1G Other electric conductors, not fitted with connectors, for a voltage not exceeding 1000 V (inspection scope: polyvinyl chloride insulated wire for electric apparatus, for a voltage exceeding 80V)	ditto	CNS 6070 (1986) or IEC 60227-1 (1993)+A1 (1995) +A2 (1997) or IEC 60227-3 (1993)+A1 (1997) or IEC 60227-4 (1992)+A1 (1997) or IEC 60227-5 (1997)+A1 (1997)+A2 (2003) or IEC 60227-6 (2001) or IEC 60227-7 (1995)+A1 (2003)	√	Nil IEC 60227-1 (1993)+A1 (1995) +A2 (1997) IEC 60227-3 (1993)+A1 (1997) IEC 60227-4 (1992)+A1 (1997) IEC 60227-5 (1997)+A1 (1997)+A2 (2003) IEC 60227-6 (2001) IEC 60227-7 (1995)+A1 (2003)	NEQ IDT IDT IDT IDT IDT IDT
8544.49.90.00.1H Other electric conductors, not fitted with connectors, for a voltage not exceeding 1000 V (inspection scope: grade heat-resistant polyvinyl chloride insulated wires, for a voltage exceeding 80V)	ditto	CNS 8379 (1995) or IEC 60227-1 (1993)+A1 (1995) +A2 (1997) or IEC 60227-3 (1993)+A1 (1997) or IEC 60227-4 (1992)+A1 (1997) or IEC 60227-5 (1997)+A1 (1997)+A2 (2003) or IEC 60227-6 (2001) or IEC 60227-7 (1995)+A1 (2003)	√	Nil IEC 60227-1 (1993)+A1 (1995) +A2 (1997) IEC 60227-3 (1993)+A1 (1997) IEC 60227-4 (1992)+A1 (1997) IEC 60227-5 (1997)+A1 (1997)+A2 (2003) IEC 60227-6 (2001) IEC 60227-7 (1995)+A1 (2003)	NEQ IDT IDT IDT IDT IDT IDT

Product type or grouping (Electrical products classified by C.C.C. Code)	Regulations	Standards			
		Domestic Standards	Please tick box if mandatory	Relevant International Standards	Extent of Alignment
8544.49.90.00.1I Other electric conductors, not fitted with connectors, for a voltage not exceeding 1000 V (inspection scope: outdoor weatherproof polyvinyl chloride insulated wires, for a voltage exceeding 80V)	ditto	CNS 8559 (1987) or IEC 60227-1 (1993)+A1 (1995) +A2 (1997) or IEC 60227-3 (1993)+A1 (1997) or IEC 60227-4 (1992)+A1 (1997) or IEC 60227-5 (1997)+A1 (1997)+A2 (2003) or IEC 60227-6 (2001) or IEC 60227-7 (1995)+A1 (2003)	√	Nil IEC 60227-1 (1993)+A1 (1995) +A2 (1997) IEC 60227-3 (1993)+A1 (1997) IEC 60227-4 (1992)+A1 (1997) IEC 60227-5 (1997)+A1 (1997)+A2 (2003) IEC 60227-6 (2001) IEC 60227-7 (1995)+A1 (2003)	NEQ IDT IDT IDT IDT IDT IDT
8544.49.90.00.1J Other electric conductors, not fitted with connectors, for a voltage not exceeding 1000 V (inspection scope: PVC insulated wires, for a voltage exceeding 80V)	ditto	CNS 10314 (1983) or IEC 60227-1 (1993)+A1 (1995) +A2 (1997) or IEC 60227-3 (1993)+A1 (1997) or IEC 60227-4 (1992)+A1 (1997) or IEC 60227-5 (1997)+A1 (1997)+A2 (2003) or IEC 60227-6 (2001) or	√	Nil IEC 60227-1 (1993)+A1 (1995) +A2 (1997) IEC 60227-3 (1993)+A1 (1997) IEC 60227-4 (1992)+A1 (1997) IEC 60227-5 (1997)+A1 (1997)+A2 (2003) IEC 60227-6 (2001)	NEQ IDT IDT IDT IDT IDT

Product type or grouping (Electrical products classified by C.C.C. Code)	Regulations	Standards			
		Domestic Standards	Please tick box if mandatory	Relevant International Standards	Extent of Alignment
		IEC 60227-7 (1995)+A1 (2003)		IEC 60227-7 (1995)+A1 (2003)	IDT
8544.49.90.00.1K Other electric conductors, not fitted with connectors, for a voltage not exceeding 1000 V (inspection scope: polyvinyl chloride insulated drop service wires, for a voltage exceeding 80V)	ditto	CNS 7781 (1987) or IEC 60227-1 (1993)+A1 (1995) +A2 (1997) or IEC 60227-3 (1993)+A1 (1997) or IEC 60227-4 (1992)+A1 (1997) or IEC 60227-5 (1997)+A1 (1997)+A2 (2003) or IEC 60227-6 (2001) or IEC 60227-7 (1995)+A1 (2003)	√	Nil IEC 60227-1 (1993)+A1 (1995) +A2 (1997) IEC 60227-3 (1993)+A1 (1997) IEC 60227-4 (1992)+A1 (1997) IEC 60227-5 (1997)+A1 (1997)+A2 (2003) IEC 60227-6 (2001) IEC 60227-7 (1995)+A1 (2003)	NEQ IDT IDT IDT IDT IDT IDT
8544.49.90.00.1L Other electric conductors, not fitted with connectors, for a voltage not exceeding 1000 V (inspection scope: rubber insulated flexible cables, for a voltage exceeding 80V)	ditto	CNS 10741 (2004) or CNS 10599 (2004) or IEC 60245-1 (2003) or IEC 60245-4 (1994)+A1 (1997)+A2 (2003)	√	Nil Nil IEC 60245-1 (2003) IEC 60245-4 (1994)+A1 (1997)+A2 (2003)	NEQ NEQ IDT IDT
9019.10.19.00.8 Massage apparatus (inspection scope: only hand-held massager not exceeding 300V, AC, single	ditto	CNS 3765 (2005) IEC 60335-2-32 (2002-10) CNS 13783-1 (2004)	√	IEC 60335-1 IEC 60335-2-32 (2002-10) CISPR 14-1	MOD IDT IDT

Product type or grouping (Electrical products classified by C.C.C. Code)	Regulations	Standards			
		Domestic Standards	Please tick box if mandatory	Relevant International Standards	Extent of Alignment
phase; excluding battery type)					
9019.10.19.00.8B Massage appliances not exceeding 300V (inspection scope: other than the medical devices specified by the Pharmaceutical Affairs Act)	ditto	CNS 3765 (2005) IEC 60335-2-32 (2002-10) CNS 13783-1 (2004)	√	IEC 60335-1 IEC 60335-2-32 (2002-10) CISPR 14-1	MOD IDT IDT
9019.10.19.00.8C Other massage apparatus (inspection scope: Foot massage appliances not exceeding 300V, other than the medical devices specified by the Pharmaceutical Affairs Act)	ditto	CNS 3765 (2005) IEC 60335-2-32 (2002-10) CNS 13783-1 (2004)	√	IEC 60335-1 IEC 60335-2-32 (2002-10) CISPR 14-1	MOD IDT IDT
9404.21.00.00.9 Mattresses, of Cellular rubber or plastics, whether or not covered (inspection scope: not exceeding 300V, other than the medical devices specified by the Pharmaceutical Affairs Act)	ditto	CNS 13783-1 (2004) CNS 3765 (2005) IEC 60335-2-81 (2002) IEC 60335-2-17 (2002) IEC 60335-2-23 (2003)	√	CISPR 14-1 IEC 60335-1 IEC 60335-2-81 (2002) IEC 60335-2-17 (2002) IEC 60335-2-23 (2003)	IDT MOD IDT IDT IDT
9404.29.00.10.9 Mattresses, of textile materials (inspection scope: not exceeding 300V, other than the medical devices specified by the Pharmaceutical Affairs Act)	ditto	CNS 13783-1 (2004) CNS 3765 (2005) IEC 60335-2-81 (2002) IEC 60335-2-17 (2002) IEC 60335-2-23 (2003)	√	CISPR 14-1 IEC 60335-1 IEC 60335-2-81 (2002) IEC 60335-2-17 (2002) IEC 60335-2-23 (2003)	IDT MOD IDT IDT IDT

Product type or grouping (Electrical products classified by C.C.C. Code)	Regulations	Standards			
		Domestic Standards	Please tick box if mandatory	Relevant International Standards	Extent of Alignment
9404.29.00.90.2 Mattresses, of other materials (inspection scope: not exceeding 300V, other than the medical devices specified by the Pharmaceutical Affairs Act)	ditto	CNS 13783-1 (2004) CNS 3765 (2005) IEC 60335-2-81 (2002) IEC 60335-2-17 (2002) IEC 60335-2-23 (2003)	√	CISPR 14-1 IEC 60335-1 IEC 60335-2-81 (2002) IEC 60335-2-17 (2002) IEC 60335-2-23 (2003)	IDT MOD IDT IDT IDT
9404.30.00.00.8 Sleeping bags (inspection scope: body warmer for personal use which not exceeding 300V, other than the medical devices specified by the Pharmaceutical Affairs Act)	ditto	CNS 13783-1 (2004) CNS 3765 (2005) IEC 60335-2-81 (2002) IEC 60335-2-17 (2002) IEC 60335-2-23 (2003)	√	CISPR 14-1 IEC 60335-1 IEC 60335-2-81 (2002) IEC 60335-2-17 (2002) IEC 60335-2-23 (2003)	IDT MOD IDT IDT IDT
9404.90.10.00.3 Quilts (inspection scope: not exceeding 300V, other than the medical devices specified by the Pharmaceutical Affairs Act)	ditto	CNS 13783-1 (2004) CNS 3765 (2005) IEC 60335-2-81 (2002) IEC 60335-2-17 (2002) IEC 60335-2-23 (2003)	√	CISPR 14-1 IEC 60335-1 IEC 60335-2-81 (2002) IEC 60335-2-17 (2002) IEC 60335-2-23 (2003)	IDT MOD IDT IDT IDT
9404.90.20.00.1 Bedspreads (bed covers) (inspection scope: not exceeding 300V, other than the medical devices specified by the Pharmaceutical Affairs Act)	ditto	CNS 13783-1 (2004) CNS 3765 (2005) IEC 60335-2-81 (2002) IEC 60335-2-17 (2002) IEC 60335-2-23 (2003)	√	CISPR 14-1 IEC 60335-1 IEC 60335-2-81 (2002) IEC 60335-2-17 (2002) IEC 60335-2-23 (2003)	IDT MOD IDT IDT IDT
9404.90.90.11.3 Other articles of bedding and similar furnishing, of wool (inspection	ditto	CNS 13783-1 (2004) CNS 3765 (2005) IEC 60335-2-81 (2002)	√	CISPR 14-1 IEC 60335-1 IEC 60335-2-81 (2002)	IDT MOD IDT

Product type or grouping (Electrical products classified by C.C.C. Code)	Regulations	Standards			
		Domestic Standards	Please tick box if mandatory	Relevant International Standards	Extent of Alignment
scope: body warmer for personal use which not exceeding 300V, other than the medical devices specified by the Pharmaceutical Affairs Act)		IEC 60335-2-17 (2002) IEC 60335-2-23 (2003)		IEC 60335-2-17 (2002) IEC 60335-2-23 (2003)	IDT IDT
9404.90.90.19.5 Other articles of bedding and similar furnishing, of other textile materials (inspection scope: body warmer for personal use which not exceeding 300V, other than the medical devices specified by the Pharmaceutical Affairs Act)	ditto	CNS 13783-1 (2004) CNS 3765 (2005) IEC 60335-2-81 (2002) IEC 60335-2-17 (2002) IEC 60335-2-23 (2003)	√	CISPR 14-1 IEC 60335-1 IEC 60335-2-81 (2002) IEC 60335-2-17 (2002) IEC 60335-2-23 (2003)	IDT MOD IDT IDT IDT
9404.90.90.90.7 Other articles of bedding and similar furnishing, of other materials (inspection scope: body warmer for personal use which not exceeding 300V, other than the medical devices specified by the Pharmaceutical Affairs Act)	ditto	CNS 13783-1 (2004) CNS 3765 (2005) IEC 60335-2-81 (2002) IEC 60335-2-17 (2002) IEC 60335-2-23 (2003)	√	CISPR 14-1 IEC 60335-1 IEC 60335-2-81 (2002) IEC 60335-2-17 (2002) IEC 60335-2-23 (2003)	IDT MOD IDT IDT IDT
9405.10.00.00.1 Chandeliers and other electric ceiling or wall lighting fittings, excluding those of a kind used for lighting public open spaces or thoroughfares (inspection scope: only those for general indoor	ditto	CNS 14335 (1999) IEC 60598-2-1 (1979) IEC 60598-2-2 (1997) IEC 60598-2-6 (1994) IEC 60598-2-23 (2001) CNS 14115 (2004)	√	IEC 60598-1 IEC 60598-2-1 (1979) IEC 60598-2-2 (1997) IEC 60598-2-6 (1994) IEC 60598-2-23 (2001) CISPR 15	MOD IDT IDT IDT IDT IDT

Product type or grouping (Electrical products classified by C.C.C. Code)	Regulations	Standards			
		Domestic Standards	Please tick box if mandatory	Relevant International Standards	Extent of Alignment
lighting purposes)					
9405.20.00.00.9A Electric table, desk, bedside or floor standing-lamps (inspection scope: only hot cathode fluorescent desk lamps)	ditto	CNS 14335 (1999) IEC 60598-2-4 (1994) CNS 14115 (2004)	√	IEC 60598-1 IEC 60598-2-4 (1994) CISPR 15	MOD IDT IDT
9405.20.00.00.9B Electric table, desk, bedside or floor standing-lamps (inspection scope: only those other than hot cathode fluorescent desk lamps)	ditto	CNS 14335 (1999) IEC 60598-2-4 (1994) IEC 60598-2-6 (1994) CNS14115 (2004)	√	IEC 60598-1 IEC 60598-2-4 (1994) IEC 60598-2-6 (1994) CISPR 15	MOD IDT IDT IDT
9405.30.00.00.7 Lighting sets of a kind used for Christmas trees (inspection scope: lighting chains only below 300V AC)	ditto	CNS 14335 (1999) IEC 60598-2-20 (1996)+A1	√	IEC 60598-1 IEC 60598-2-20 (1996)+A1	MOD IDT
9405.40.50.00.4 Miner's lamps (inspection scope: safety headgear lamps)	ditto	CNS 2415 (2005)	√	Nil	NEQ
9405.40.90.00.6B Other electric lamps and lighting fittings (inspection scope: only those for general indoor lighting purposes)	ditto	CNS 14335 (1999) IEC 60598-2-1 (1979) IEC 60598-2-2 (1997) IEC 60598-2-6 (1994) IEC 60598-2-23 (2001) CNS 14115 (2004)	√	IEC 60598-1 IEC 60598-2-1 (1979) IEC 60598-2-2 (1997) IEC 60598-2-6 (1994) IEC 60598-2-23 (2001) CISPR 15	MOD IDT IDT IDT IDT IDT
9405.40.90.00.6C	ditto	CNS 14115 (2004)		CISPR 15	IDT

Product type or grouping (Electrical products classified by C.C.C. Code)	Regulations	Standards			
		Domestic Standards	Please tick box if mandatory	Relevant International Standards	Extent of Alignment
		CNS 14335 (1999) IEC 60598-2-1 (1979-01)+am1 (1987-01) IEC 60598-2-2 (1996-05)+am1 (1997-01) IEC 60598-2-4 (1997-04) IEC 60598-2-6 (1994-06)+am1 (1996-11) IEC 60598-2-23 (1996-04)+am1 (2000-05)	√	IEC 60598-1 IEC 60598-2-1 (1979-01)+am1 (1987-01) IEC 60598-2-2 (1996-05)+am1 (1997-01) IEC 60598-2-4 (1997-04) IEC 60598-2-6 (1994-06)+am1 (1996-11) IEC 60598-2-23 (1996-04)+am1 (2000-05)	MOD IDT IDT IDT IDT IDT
9405.40.00.90.6D Aquarium Lighting Fixture	ditto	CNS 14335 (1999) IEC 60598-2-11 (2005-05) CNS 14115 (2004)	√	IEC 60598-1 IEC 60598-2-11 (2005-05) CISPR 15	MOD IDT IDT
9405.40.90.00.6E Other lighting sets and associate (inspection scope: only those other than hot cathode fluorescent desk lamps)	ditto	CNS 14335 (1999) IEC 60598-2-4 (1994) IEC 60598-2-6 (1994) CNS14115 (2004)	√	IEC 60598-1 IEC 60598-2-4 (1994) IEC 60598-2-6 (1994) CISPR 15	MOD IDT IDT IDT
9405.40.90.00.6F Other lighting sets and associate (inspection scope: lighting chains only below 300V AC)	ditto	CNS 14335 (1999) IEC 60598-2-20 (1996)+A1	√	IEC 60598-1 IEC 60598-2-20 (1996)+A1	MOD IDT
9506.91.00.00.1B Articles and equipment for general	ditto	CNS 3765 (2005) IEC 60335-2-32 (2002-10)	√	IEC 60335-1 IEC 60335-2-32 (2002-10)	MOD IDT

Product type or grouping (Electrical products classified by C.C.C. Code)	Regulations	Standards			
		Domestic Standards	Please tick box if mandatory	Relevant International Standards	Extent of Alignment
physical exercise, gymnastics or athletics (inspection scope: massage appliances not exceeding 300V, other than the medical devices specified by the Pharmaceutical Affairs Act)		CNS 13783-1 (2004)		CISPR 14-1	IDT

2.2. Electronics/IT products

Product type or grouping (Electronics/IT products classified by C.C.C. Code)	Regulations	Standards			
		Domestic Standards	Please tick box if mandatory	Relevant International Standards	Extent of Alignment
8443.31.00.00.2A Machines which perform two or more of the functions of printing, copying or facsimile transmission, capable of connecting to an automatic data processing machine or to a network (inspection scope: only those products excluding photo-copying apparatus)	ditto	CNS 13438 (2006) CNS 14336-1 (2010)	√	CISPR 22 IEC 60950	IDT MOD
8443.31.00.00.2B Machines which perform two or more of the functions of printing, copying or facsimile transmission, capable of connecting to an automatic data processing machine or to a network (inspection scope:	ditto	CNS 13438 (2006) CNS 14336-1 (2010)	√	CISPR 22 IEC 60950	IDT MOD

Product type or grouping (Electronics/IT products classified by C.C.C. Code)	Regulations	Standards			
		Domestic Standards	Please tick box if mandatory	Relevant International Standards	Extent of Alignment
those only photo-copying apparatus)					
8443.32.00.00.1A Other printers, copying machines and facsimile machines, capable of connecting to an automatic data processing machine or to a network (inspection scope: only those products excluding photo-copying apparatus)	ditto	CNS 13438 (2006) CNS 14336-1 (2010)	√	CISPR 22 IEC 60950	IDT MOD
8443.32.00.00.1B Other printers, copying machines and facsimile machines, capable of connecting to an automatic data processing machine or to a network (inspection scope: those only photo-copying apparatus)	ditto	CNS 13438 (2006) CNS 14336-1 (2010)	√	CISPR 22 IEC 60950	IDT MOD
8443.39.00.90.5 Other printers, copying machines and facsimile machines, whether or not combined	ditto	CNS 13438 (2006) CNS 14336-1 (2010)	√	CISPR 22 IEC 60950	IDT MOD
8471.30.00.00.8 Portable automatic data processing machines, weighing not more than 10 kg, consisting of at least a central processing unit, a keyboard and a displayer	ditto	CNS 13438 (2006) CNS 14336-1 (2010)	√	CISPR 22 IEC 60950	IDT MOD
8471.41.00.00.5	ditto	CNS 13438 (2006)	√	CISPR 22	IDT

Product type or grouping (Electronics/IT products classified by C.C.C. Code)	Regulations	Standards			
		Domestic Standards	Please tick box if mandatory	Relevant International Standards	Extent of Alignment
Other automatic data processing machines, comprising in the same housing at least a central processing unit and an input and output unit, whether or not combined		CNS 14336-1 (2010)		IEC 60950	MOD
8471.49.00.00.7 Other digital automatic data processing machines, presented in the form of systems	ditto	CNS 13438 (2006) CNS 14336-1 (2010)	√	CISPR 22 IEC 60950	IDT MOD
8471.50.00.00.3 Processing units other than those of subheadings 8471.41 or 8471.49, whether or not containing in the same housing one or two of the following types of unit; storage units, input units, output units	ditto	CNS 13438 (2006) CNS 14336-1 (2010)	√	CISPR 22 IEC 60950	IDT MOD
8471.60.10.00.9 Terminals	ditto	CNS 13438 (2006) CNS 14336-1 (2010)	√	CISPR 22 IEC 60950	IDT MOD
8471.60.30.10.3 Radio Keyboard	ditto	CNS 13438 (2006) CNS 14336-1 (2010)	√	CISPR 22 IEC 60950	IDT MOD
8471.60.90.10.0 Image scanners	ditto	CNS 13438 (2006) CNS 14336-1 (2010)	√	CISPR 22 IEC 60950	IDT MOD
8471.60.90.20.8 Radio Mouse	ditto	CNS 13438 (2006) CNS 14336-1 (2010)	√	CISPR 22 IEC 60950	IDT MOD

Product type or grouping (Electronics/IT products classified by C.C.C. Code)	Regulations	Standards			
		Domestic Standards	Please tick box if mandatory	Relevant International Standards	Extent of Alignment
8471.60.90.90.3 Other input or output units, whether or not presented with the rest of a system and whether or not containing storage units in the same housing	ditto	CNS 13438 (2006) CNS 14336-1 (2010)	√	CISPR 22 IEC 60950	IDT MOD
8471.90.10.00.3 Computers controlled by special programs and word processing machines with memory storages	ditto	CNS 13438 (2006) CNS 14336-1 (2010)	√	CISPR 22 IEC 60950	IDT MOD
8471.90.90.00.6 Other automatic data processing machines of heading No. 8471	ditto	CNS 13438 (2006) CNS 14336-1 (2010)	√	CISPR 22 IEC 60950	IDT MOD
8472.90.50.00.3 Automatic teller machines	ditto	CNS 13438 (2006) CNS 14336-1 (2010)	√	CISPR 22 IEC 60950	IDT MOD
8472.90.90.00.5A Other office machines of heading 84.72 (inspection scope: limited electric shredder machines and it's voltage below AC 300V, rated input not exceeding 500W only)	ditto	CNS 13783 (2004) CNS 14336-1 (2010)	√	CISPR 14-1 IEC 60950	IDT MOD
8472.90.90.00.5B Other office machines of heading 84.72 (inspection scope: limited electric shredder machines and it's	ditto	CNS 13783 (2004)	√	CISPR 14-1	IDT MOD

Product type or grouping (Electronics/IT products classified by C.C.C. Code)	Regulations	Standards			
		Domestic Standards	Please tick box if mandatory	Relevant International Standards	Extent of Alignment
voltage below DC 300V, rated input not exceeding 500W only)					
8504.40.20.00.3 Static converters for automatic data processing machines and units thereof, and telecommunication apparatus	ditto	CNS 13438 (2006) CNS 14336-1 (2010) or CNS 14408 (2003)	√	CISPR 22 IEC 60950 IEC 60065	IDT MOD MOD
8504.40.20.00.3 Secondary lithium mobile power bank for computer, communication and consumer electronics	ditto	CNS 15364 (2010) (valid till April 30, 2017) or CNS 15364 (2013) CNS 14336-1 (2010) CNS 13438 (2006)	√	IEC 62133 IEC 60950 CISPR 22	MOD MOD IDT
8504.40.20.00.3 Battery charger for computer, communication and consumer electronics	ditto	CNS 14336-1 (2010) or CNS 14408 (2003) CNS 13438 (2006)	√	IEC 60950 IEC 60065 CISPR 22	MOD MOD IDT
8504.40.91.00.7 Other power supply, exchangeable type	ditto	CNS 13438 (2006) CNS 14336-1 (2010) or CNS 14408 (2003)	√	CISPR 22 IEC 60950 IEC 60065	IDT MOD MOD
8504.40.91.00.7 Secondary lithium mobile power bank for computer, communication and consumer electronics	ditto	CNS 15364 (2010) (valid till April 30, 2017) or CNS 15364 (2013) CNS 14336-1 (2010) CNS 13438 (2006)	√	IEC 62133 IEC 60950 CISPR 22	MOD MOD IDT
8504.40.91.00.7 Battery charger for computer,	ditto	CNS 14336-1 (2010) or CNS 14408 (2003)	√	IEC 60950 IEC 60065	MOD MOD

Product type or grouping (Electronics/IT products classified by C.C.C. Code)	Regulations	Standards			
		Domestic Standards	Please tick box if mandatory	Relevant International Standards	Extent of Alignment
communication and consumer electronics		CNS 13438 (2006)		CISPR 22	IDT
8504.40.92.00.6 Other uninterruptible power supply, having a power handling capacity not exceeding 10KVA	ditto	CNS 14757-2 (2004) CNS 14843-1 (2004) or CNS 14843-2 (2004)	√	IEC 62040-2 IEC 62040-1-1 IEC 62040-1-2	IDT MOD MOD
8504.40.93.00.5 Other uninterruptible power supply	ditto	CNS 14757-2 (2004) CNS 14843-1 (2004) or CNS 14843-2 (2004)	√	IEC 62040-2 IEC 62040-1-1 IEC 62040-1-2	IDT MOD MOD
8504.40.94.00.4 Secondary lithium mobile power bank for computer, communication and consumer electronics	ditto	CNS 15364 (2010) (valid till April 30, 2017) or CNS 15364 (2013) CNS 14336-1 (2010) CNS 13438 (2006)	√	IEC 62133 IEC 60950 CISPR 22	MOD MOD IDT
8504.40.94.00.4 Battery charger for computer, communication and consumer electronics	ditto	CNS 14336-1 (2010) or CNS 14408 (2003) CNS 13438 (2006)	√	IEC 60950 IEC 60065 CISPR 22	MOD MOD IDT
8504.40.99.90.0 Other static converter	ditto	IEC 61558-1 (Edition 1.1-1998-07)	√	IEC 61558-1 (Edition 1.1-1998-07)	IDT
8504.40.99.90.0 Secondary lithium mobile power bank for computer, communication and consumer electronics	ditto	CNS 15364 (2010) (valid till April 30, 2017) or CNS 15364 (2013) CNS 14336-1 (2010) CNS 13438 (2006)	√	IEC 62133 IEC 60950 CISPR 22	MOD MOD IDT

Product type or grouping (Electronics/IT products classified by C.C.C. Code)	Regulations	Standards			
		Domestic Standards	Please tick box if mandatory	Relevant International Standards	Extent of Alignment
8504.40.99.90.0 Battery charger for computer, communication and consumer electronics	ditto	CNS 14336-1 (2010) or CNS 14408 (2003) CNS 13438 (2006)	√	IEC 60950 IEC 60065 CISPR 22	MOD MOD IDT
8507.60.00.00.9 Lithium accumulators (inspection scope: only Secondary lithium batteries for electrical motocycles)	ditto	CNS 15424-1 (2011) CNS 15424-2 (2011) CNS 15387 (2010)	√	Nil Nil Nil	NEQ NEQ NEQ
8507.60.00.00.9 Secondary lithium cells and batteries for computer, communication and consumer electronics except button type	ditto	CNS 15364 (2010) (valid till April 30, 2017) or CNS 15364 (2013)	√	IEC 62133	MOD
8507.60.00.00.9 Secondary lithium mobile power bank for computer, communication and consumer electronics	ditto	CNS 15364 (2010) (valid till April 30, 2017) or CNS 15364 (2013) CNS 14336-1 (2010) CNS 13438 (2006)	√	IEC 62133 IEC 60950 CISPR 22	MOD MOD IDT
8507.80.00.10.3 Lithium accumulators (inspection scope: only Secondary lithium batteries for electrical motocycles)	ditto	CNS 15424-1 (2011) CNS 15424-2 (2011) CNS 15387 (2010)	√	Nil Nil Nil	NEQ NEQ NEQ
8507.80.00.10.3 Secondary lithium cells and batteries for computer, communication and consumer	ditto	CNS 15364 (2010) (valid till April 30, 2017) or CNS 15364 (2013)	√	IEC 62133	MOD

Product type or grouping (Electronics/IT products classified by C.C.C. Code)	Regulations	Standards			
		Domestic Standards	Please tick box if mandatory	Relevant International Standards	Extent of Alignment
electronics except button type					
8507.80.00.10.3 Secondary lithium mobile power bank for computer, communication and consumer electronics	ditto	CNS 15364 (2010) (valid till April 30, 2017) or CNS 15364 (2013) CNS 14336-1 (2010) CNS 13438 (2006)	√	IEC 62133 IEC 60950 CISPR 22	MOD MOD IDT
8507.80.00.90.6 Lithium accumulators (inspection scope: only Secondary lithium batteries for electrical motocyces)	ditto	CNS 15424-1 (2011) CNS 15424-2 (2011) CNS 15387 (2010)	√	Nil Nil Nil	NEQ NEQ NEQ
8507.80.00.90.6 Secondary lithium cells and batteries for computer, communication and consumer electronics except button type	ditto	CNS 15364 (2010) (valid till April 30, 2017) or CNS 15364 (2013)	√	IEC 62133	MOD
8507.80.00.90.6 Secondary lithium mobile power bank for computer, communication and consumer electronics	ditto	CNS 15364 (2010) (valid till April 30, 2017) or CNS 15364 (2013) CNS 14336-1 (2010) CNS 13438 (2006)	√	IEC 62133 IEC 60950 CISPR 22	MOD MOD IDT
8518.21.00.00.4A Single loudspeakers, mounted in their enclosures (inspection scope: with built-in amplifier, excluding those only using DC power and HI-END audio)	ditto	CNS 14408 (2004) CNS13439 (2004)	√	IEC 60065 CISPR 13	MOD IDT

Product type or grouping (Electronics/IT products classified by C.C.C. Code)	Regulations	Standards			
		Domestic Standards	Please tick box if mandatory	Relevant International Standards	Extent of Alignment
8518.21.00.00.4B Single loudspeakers, mounted in their enclosures (inspection scope: with built-in amplifier, DC power only)	ditto	CNS13439 (2004)	√	CISPR 13	IDT
8518.22.00.00.3A Multiple loudspeakers, mounted in their enclosures (inspection scope: with built-in amplifier, excluding those only using DC power and HI-END audio)	ditto	CNS 14408 (2004) CNS13439 (2004)	√	IEC 60065 CISPR 13	MOD IDT
8518.22.00.00.3B Multiple loudspeakers, mounted in their enclosures (inspection scope: with built-in amplifier, those only DC power)	ditto	CNS13439 (2004)	√	CISPR 13	IDT
8518.40.90.00.2 Other audio-frequency electric amplifier (inspection scope: excluding those using HI-END audio)	ditto	CNS 14408 (2004) CNS13439 (2004)	√	IEC 60065 CISPR 13	MOD IDT
8518.50.90.00.9A Other electric sound amplifier sets (inspection scope: excluding those only using DC power and HI-END audio)	ditto	CNS 14408 (2004) CNS13439 (2004)	√	IEC 60065 CISPR 13	MOD IDT

Product type or grouping (Electronics/IT products classified by C.C.C. Code)	Regulations	Standards			
		Domestic Standards	Please tick box if mandatory	Relevant International Standards	Extent of Alignment
8518.50.90.00.9B Other electric sound amplifier sets (inspection scope: those only DC power)	ditto	CNS13439 (2004)	√	CISPR 13	IDT
8519.20.10.00.2A Record-players operated by coins, banknotes, bank cards, tokens or by other means of payment (inspection scope: excluding those only DC power)	ditto	CNS 14408 (2004) CNS13439 (2004)	√	IEC 60065 CISPR 13	MOD IDT
8519.20.10.00.2B Record-players operated by coins, banknotes, bank cards, tokens or by other means of payment (inspection scope: those only DC power)	ditto	CNS13439 (2004)	√	CISPR 13	IDT
8519.20.20.00.0A Magnetic audio disc player operated by coins, banknotes, bank cards, tokens or by other means of payment (inspection scope: excluding those only DC power or HI-END audio)	ditto	CNS 14408 (2004) CNS13439 (2004)	√	IEC 60065 CISPR 13	MOD IDT
8519.20.20.00.0B Magnetic audio disc player operated by coins, banknotes, bank cards, tokens or by other means of	ditto	CNS13439 (2004)	√	CISPR 13	IDT

Product type or grouping (Electronics/IT products classified by C.C.C. Code)	Regulations	Standards			
		Domestic Standards	Please tick box if mandatory	Relevant International Standards	Extent of Alignment
payment (inspection scope: those only DC power)					
8519.20.90.00.5A Other sound recording or reproducing apparatus operated by coins, banknotes, bank cards, tokens or by other means of payment (inspection scope: excluding those only DC power or HI-END audio)	ditto	CNS 14408 (2004) CNS13439 (2004)	√	IEC 60065 CISPR 13	MOD IDT
8519.20.90.00.5B Other sound recording or reproducing apparatus operated by coins, banknotes, bank cards, tokens or by other means of payment (inspection scope: those only DC power)	ditto	CNS13439 (2004)	√	CISPR 13	IDT
8519.81.00.00.0A Sound recording or reproducing apparatus for using magnetic, optical or semiconductor media (inspection scope: excluding those only DC power or HI-END audio)	ditto	CNS 14408 (2004) CNS13439 (2004)	√	IEC 60065 CISPR 13	MOD IDT
8519.81.00.00.0B Sound recording or reproducing apparatus for using magnetic, optical or semiconductor media	ditto	CNS13439 (2004)	√	CISPR 13	IDT

Product type or grouping (Electronics/IT products classified by C.C.C. Code)	Regulations	Standards			
		Domestic Standards	Please tick box if mandatory	Relevant International Standards	Extent of Alignment
(inspection scope: those only DC power)					
8519.89.00.00.2A Other sound recording or reproducing apparatus (inspection scope: excluding those only DC power or HI-END audio)	ditto	CNS 14408 (2004) CNS13439 (2004)	√	IEC 60065 CISPR 13	MOD IDT
8519.89.00.00.2B Other sound recording or reproducing apparatus (inspection scope: those only DC power)	ditto	CNS13439 (2004)	√	CISPR 13	IDT
8521.90.10.00.3A Laser-optical video disc players (inspection scope: excluding those only DC power)	ditto	CNS 13439 (2004) (Multimedia products may choose CNS 13438 (2006)) CNS 14408 (2004) (Multimedia products may choose CNS 14336-1 (2010))	√	CISPR 13 IEC 60065	IDT MOD
8521.90.10.00.3B Laser-optical video disc players (inspection scope: those only using DC power and monitor)	ditto	CNS 13439 (2004) (Multimedia products may choose CNS 13438 (2006)) CNS 14408 (2004) (Multimedia products may choose CNS 14336-1 (2010))	√	CISPR 13 IEC 60065	IDT MOD
8521.90.10.00.3C Laser-optical video disc players (inspection scope: those only using DC power and without monitor)	ditto	CNS 13439 (2004) or CNS 13438 (2006) (for the product which has the function of IT products)	√	CISPR 13 CISPR 22	IDT IDT

Product type or grouping (Electronics/IT products classified by C.C.C. Code)	Regulations	Standards			
		Domestic Standards	Please tick box if mandatory	Relevant International Standards	Extent of Alignment
8521.90.30.00.9 Digital record hard disk type video recorder/player or video player, with BNC connector which can connect out with RS 232, RS422 or GPI interface	ditto	CNS 13439 (2004) (Multimedia products may choose CNS 13438 (2006)) CNS 14408 (2004) (Multimedia products may choose CNS 14336-1 (2010))	√	CISPR 13 IEC 60065	IDT MOD
8521.90.90.00.6 Other video recording or reproducing apparatus	ditto	CNS 13439 (2004) (Multimedia products may choose CNS 13438 (2006)) CNS 14408 (2004) (Multimedia products may choose CNS 14336-1 (2010))	√	CISPR 13 IEC 60065	IDT MOD
8526.91.90.00.0 Radio navigational aid apparatus (inspection scope: those only vehicle Global Positioning System (GPS) receivers or handheld GPS receivers)	ditto	CNS 13439 (2004) (Multimedia products may choose CNS 13438 (2006)) CNS 14408 (2004) (Multimedia products may choose CNS 14336-1 (2010))	√	CISPR 13 IEC 60065	IDT MOD
8527.13.00.00.3 Other radio-broadcast receivers capable of operating without an external source of power, combines with sound recording or reproducing apparatus	ditto	CNS13439 (2004)	√	CISPR 13	IDT
8527.19.00.00.7 Radio-broadcast receivers capable of operating without an external	ditto	CNS13439 (2004)	√	CISPR 13	IDT

Product type or grouping (Electronics/IT products classified by C.C.C. Code)	Regulations	Standards			
		Domestic Standards	Please tick box if mandatory	Relevant International Standards	Extent of Alignment
source of power, not combined with sound recording or reproducing apparatus					
8527.21.00.00.3 Radio-broadcast receivers not capable of operating without an external source of power, of a kind used in motor vehicles, combined with sound recording or reproducing apparatus	ditto	CNS13439 (2004)	√	CISPR 13	IDT
8527.29.00.00.5 Radio-broadcast receivers not capable of operating without an external source of power, of a kind used in motor vehicles, not combined with sound recording or reproducing apparatus	ditto	CNS13439 (2004)	√	CISPR 13	IDT
8527.91.00.00.8A Other radio-broadcast receivers combined with sound recording or reproducing apparatus (inspection scope: excluding those only DC power)	ditto	CNS 14408 (2004) CNS13439 (2004)	√	IEC 60065 CISPR 13	MOD IDT
8527.91.00.00.8B Other radio-broadcast receivers combined with sound recording or reproducing apparatus (inspection	ditto	CNS13439 (2004)	√	CISPR 13	IDT

Product type or grouping (Electronics/IT products classified by C.C.C. Code)	Regulations	Standards			
		Domestic Standards	Please tick box if mandatory	Relevant International Standards	Extent of Alignment
scope: those only DC power)					
8527.92.00.00.7A Other radio-broadcast receivers, not combined with sound recording or reproducing apparatus but combined with a clock (inspection scope: excluding those only DC power)	ditto	CNS 14408 (2004) CNS13439 (2004)	√	IEC 60065 CISPR 13	MOD IDT
8527.92.00.00.7B Other radio-broadcast receivers, not combined with sound recording or reproducing apparatus but combined with a clock (inspection scope: those only DC power)	ditto	CNS13439 (2004)	√	CISPR 13	IDT
8527.99.00.00.0A Other radio-broadcast receivers (inspection scope: excluding those only both DC power and HI-END audio)	ditto	CNS 14408 (2004) CNS13439 (2004)	√	IEC 60065 CISPR 13	MOD IDT
8527.99.00.00.0B Other radio-broadcast receivers (inspection scope: those only DC power)	ditto	CNS13439 (2004)	√	CISPR 13	IDT
8528.41.00.00.8 Cathode-ray tube monitors of a kind solely or principally used in an	ditto	CNS 13438 (2006) CNS 14336-1 (2010)	√	CISPR 22 IEC 60950	IDT MOD

Product type or grouping (Electronics/IT products classified by C.C.C. Code)	Regulations	Standards			
		Domestic Standards	Please tick box if mandatory	Relevant International Standards	Extent of Alignment
automatic data processing system of heading 8471					
8528.49.10.00.8 Other colour cathode-ray tube monitors (inspection scope: only those for TV use)	ditto	CNS 14408 (2004) CNS13439 (2004)	√	IEC 60065 CISPR 13	MOD IDT
8528.49.20.00.6 Other black and white or other monochrome cathode-ray tube monitors (inspection scope: only those for TV use)	ditto	CNS 14408 (2004) CNS13439 (2004)	√	IEC 60065 CISPR 13	MOD IDT
8528.51.00.00.5 Other monitors of a kind solely or principally used in an automatic data processing system of heading 8471	ditto	CNS 13438 (2006) CNS 14336-1 (2010)	√	CISPR 22 IEC 60950	IDT MOD
8528.59.10.00.5 Other colour non-cathode-ray tube monitors	ditto	CNS 13439 (2004) (Multimedia products may choose CNS 13438 (2006)) CNS 14408 (2004) (Multimedia products may choose CNS 14336-1 (2010))		CISPR 13 IEC 60065	IDT MOD
8528.59.20.00.3 Other black and white or other monochrome non-cathode-ray tube monitors (inspection scope: only those for TV use)	ditto	CNS 14408 (2004) CNS13439 (2004)	√	IEC 60065 CISPR 13	MOD IDT

Product type or grouping (Electronics/IT products classified by C.C.C. Code)	Regulations	Standards			
		Domestic Standards	Please tick box if mandatory	Relevant International Standards	Extent of Alignment
8528.69.10.00.3 Other Colour video projectors (inspection scope: only for internal projection)	ditto	CNS 13439 (2004) (Multimedia products may choose CNS 13438 (2006)) CNS 14408 (2004) (Multimedia products may choose CNS 14336-1 (2010))	√	CISPR 13 IEC 60065	IDT MOD
8528.71.10.00.9 Video tuners (inspection scope: having digital terrestrial television reception capability, excluding those for only vehicle use or computer use)	ditto	CNS 13439 (2004) CNS 14408 (2004) “Technical Specification for Digital Terrestrial Television Receivers” (Adopted on 29 August, 2011)	√	CISPR 13 IEC 60065 Nil	IDT MOD NEQ
8528.71.20.00.7A Set top boxes which have a communication function, with a microprocessor-based device incorporating a built-in or external modem for gaining access to the Internet, and having a function of interactive information exchange and which also have a function to receive television signals (inspection scope: Other video recording or reproducing apparatus with external modem for gaining access to the Internet)	ditto	CNS 13439 (2004) (Multimedia products may choose CNS 13438 (2006)) CNS 14408 (2004) (Multimedia products may choose CNS 14336-1 (2010))	√	CISPR 13 IEC 60065	IDT MOD
8528.71.20.00.7B	ditto	CNS 13439 (2004)	√	CISPR 13	IDT

Product type or grouping (Electronics/IT products classified by C.C.C. Code)	Regulations	Standards			
		Domestic Standards	Please tick box if mandatory	Relevant International Standards	Extent of Alignment
Set top boxes which have a communication function, with a microprocessor-based device incorporating a built-in or external modem for gaining access to the Internet, and having a function of interactive information exchange and which also have a function to receive television signals ((inspection scope: having digital terrestrial television reception capability with external modem for gaining access to the Internet, excluding those for only Vehicle use or computer use)		(Multimedia products may choose CNS 13438 (2006)) CNS 14408 (2004) (Multimedia products may choose CNS 14336-1 (2010))		IEC 60065	MOD
8528.72.00.00.0 Colour televisions	ditto	CNS 13439 (2004) (Multimedia products may choose CNS 13438 (2006)) CNS 14408 (2004) (Multimedia products may choose CNS 14336-1 (2010))	√	CISPR 13 IEC 60065	IDT MOD
8528.73.00.00.9 Black and white or other monochrome televisions	ditto	CNS 13439 (2004) (Multimedia products may choose CNS 13438 (2006)) CNS 14408 (2004) (Multimedia products may choose CNS 14336-1 (2010))	√	CISPR 13 IEC 60065	IDT MOD
8543.70.99.90.6B	ditto	CNS 14408 (2004) CNS13439 (2004)	√	IEC 60065 CISPR 13	MOD IDT

Product type or grouping (Electronics/IT products classified by C.C.C. Code)	Regulations	Standards			
		Domestic Standards	Please tick box if mandatory	Relevant International Standards	Extent of Alignment
Other electrical machines and apparatus (inspection scope: excluding those only DC power)					
9017.10.10.00.9 Drafting tables and machines fitted with data processing system, whether or not automatic	ditto	CNS 13438 (2006) CNS 14336-1 (2010)	√	CISPR 22 IEC 60950	IDT MOD
9017.20.10.00.7 Drafting machines for data processing system	ditto	CNS 13438 (2006) CNS 14336-1 (2010)	√	CISPR 22 IEC 60950	IDT MOD

3. Products covered by supplier declarations (DoC Scheme)

Product type or grouping (Electronics/IT products classified by C.C.C. Code)	Regulations	Standards			
		Domestic Standards	Please tick box if mandatory	Relevant International Standards	Extent of Alignment
8469.00.10.00.6 Word-processing machines (inspection scope : only electronic type)	Commodity Inspection Act	CNS 13438 (2006) CNS 14336-1 (2010)	√	CISPR22 IEC 60950	IDT MOD
8469.00.20.00.4 Automatic typewriters (inspection scope :only electronic type)	ditto	CNS 13438 (2006) CNS 14336-1 (2010)	√	CISPR22 IEC 60950	IDT MOD
8469.00.31.00.1 Typewriters, electric, weighing not more than 12 kg, excluding case (inspection scope :only electronic type)	ditto	CNS 13438 (2006) CNS 14336-1 (2010)	√	CISPR 22 IEC 60950	IDT MOD
8469.00.39.00.3 Other typewriters, electric (inspection scope : only electronic type)	ditto	CNS 13438 (2006) CNS 14336-1 (2010)	√	CISPR 22 IEC 60950	IDT MOD
8469.00.40.00.0 Braille typewriters (inspection scope : only electronic type)	ditto	CNS 13438 (2006) CNS 14336-1 (2010)	√	CISPR 22 IEC 60950	IDT MOD
8469.00.51.00.6 Typewriters, non-electric, weighing not more than 12 kg, excluding case (inspection scope : only electronic type)	ditto	CNS 13438 (2006) CNS 14336-1 (2010)	√	CISPR 22 IEC 60950	IDT MOD
8469.00.59.00.8 Other typewriters, non-electric (inspection scope : only electronic type)	ditto	CNS 13438 (2006) CNS 14336-1 (2010)	√	CISPR 22 IEC 60950	IDT MOD
8470.90.00.00.6	ditto	CNS 13438 (2006)	√	CISPR 22	IDT

Product type or grouping (Electronics/IT products classified by C.C.C. Code)	Regulations	Standards			
		Domestic Standards	Please tick box if mandatory	Relevant International Standards	Extent of Alignment
Other machines of heading No.84.70		CNS 14336-1 (2010)		IEC 60950	MOD
8470.50.00.00.4 Cash registers	ditto	CNS 13438 (2006) CNS 14336-1 (2010)	√	CISPR 22 IEC 60950	IDT MOD
8470.10.10.00.1 Pocket-size data recording, reproducing and displaying machines with calculating functions (inspection scope: those only for power consumption more than 10nW)	ditto	CNS 13438 (2006) CNS 14336-1 (2010)	√	CISPR 22 IEC 60950	IDT MOD
8470.10.20.00.9 Electric calculators capable of operation without an external source of electric power (inspection scope: those only for power consumption more than 10nW)	ditto	CNS13438 (2006)	√	CISPR 22	IDT
8470.21.00.00.0 Electronic calculating machines, incorporating a printing device	ditto	CNS 13438 (2006) CNS 14336-1 (2010)	√	CISPR 22 IEC 60950	IDT MOD
8470.29.00.00.2 Other electronic calculating machines	ditto	CNS 13438 (2006) CNS 14336-1 (2010)	√	CISPR 22 IEC 60950	IDT MOD
8470.30.00.00.9 Other calculating machines	ditto	CNS 13438 (2006) CNS 14336-1 (2010)	√	CISPR 22 IEC 60950	IDT MOD
8471.70.10.10.5A Hard disc devices (external type)	ditto	CNS 13438 (2006) CNS 14336-1 (2010)	√	CISPR 22 IEC 60950	IDT MOD
8471.70.10.10.5B Hard disc devices (internal type)	ditto	CNS13438 (2006)	√	CISPR 22	IDT
8471.70.10.20.3A	ditto	CNS 13438 (2006)	√	CISPR 22	IDT

Product type or grouping (Electronics/IT products classified by C.C.C. Code)	Regulations	Standards			
		Domestic Standards	Please tick box if mandatory	Relevant International Standards	Extent of Alignment
Soft disc devices (external type)		CNS 14336-1 (2010)		IEC 60950	MOD
8471.70.10.20.3B Soft disc devices (internal type)	ditto	CNS13438 (2006)	√	CISPR 22	IDT
8471.70.10.30.1A Optical disc devices (external type)	ditto	CNS 13438 (2006) CNS 14336-1 (2010)	√	CISPR 22 IEC 60950	IDT MOD
8471.70.10.30.1B Optical disc devices (internal type)	ditto	CNS13438 (2006)	√	CISPR 22	IDT
8471.70.10.90.8A Other magnetic disc devices (external type)	ditto	CNS 13438 (2006) CNS 14336-1 (2010)	√	CISPR 22 IEC 60950	IDT MOD
8471.70.10.90.8B Other magnetic disc devices (internal type)	ditto	CNS13438 (2006)	√	CISPR 22	IDT
8471.70.90.00.0A Other storage units (external type)	ditto	CNS 13438 (2006) CNS 14336-1 (2010)	√	CISPR 22 IEC 60950	IDT MOD
8471.70.90.00.0B Other storage units (internal type)	ditto	CNS13438 (2006)	√	CISPR 22	IDT
8471.80.00.00.7 Other units of automatic data processing machines	ditto	CNS 13438 (2006) CNS 14336-1 (2010)	√	CISPR 22 IEC 60950	IDT MOD
8471.90.40.00.7 Data transcribing machines for inputting into data processing machines, such as card punch machines, verifying machines, magnetic tape encoders, etc.	ditto	CNS 13438 (2006) CNS 14336-1 (2010)	√	CISPR 22 IEC 60950	IDT MOD
8473.30.00.00.6	ditto	CNS 13438 (2006)	√	CISPR 22	IDT

Product type or grouping (Electronics/IT products classified by C.C.C. Code)	Regulations	Standards			
		Domestic Standards	Please tick box if mandatory	Relevant International Standards	Extent of Alignment
Parts and accessories of the machines of heading 84.71 (inspection scope: only limited to Class B main board of computers and add-on cards with I/O port; except for Fax Card, Modem card, Fax/ Modem Card and other add-on card with communication function)		CNS 14336-1 (2010)		IEC 60950	MOD
8525.80.21.10.6 Digital still image video cameras and digital cameras, with radio function	ditto	CNS13438	√	CISPR22	IDT
8525.80.21.90.9 Digital still image video cameras and digital cameras	ditto	CNS13438	√	CISPR22	IDT
8525.80.90.10.2 video camera recorders, with radio function (inspection scope : only digital video camera)	ditto	CNS13438	√	CISPR22	IDT
8525.80.90.90.5 Other video camera recorders (inspection scope : only digital video camera)	ditto	CNS13438	√	CISPR22	IDT
8517.62.00.00.5 Machines for the reception, conversion and transmission or regeneration of voice, images or other data, including switching and routing apparatus (inspection scope : only Router, Bridge, Switch, Hub)	ditto	CNS 13438 (2006) CNS 14336-1 (2010)	√	CISPR 22 IEC 60950	IDT MOD

Product type or grouping (Electronics/IT products classified by C.C.C. Code)	Regulations	Standards			
		Domestic Standards	Please tick box if mandatory	Relevant International Standards	Extent of Alignment
8471.60.30.90.6 Other Keyboard	ditto	CNS 13438 (2006) CNS 14336-1 (2010)	√	CISPR 22 IEC 60950	IDT MOD
8471.90.30.00.9 Magnetic or optical readers	ditto	CNS 13438 (2006) CNS 14336-1 (2010)	√	CISPR 22 IEC 60950	IDT MOD
8519.30.00.00.2A Turntables (record-decks) (inspection scope: excluding those only DC power or HI-END audio)	ditto	CNS13439 (2004) CNS 14408 (2004)	√	CISPR 13 IEC 60065	IDT MOD
8519.30.00.00.2B Turntables (record-decks) (inspection scope: those only DC power)	ditto	CNS13439 (2004)	√	CISPR 13	IDT
8521.10.12.00.8 Magnetic tape-type video tape recorder/player, other than the articles of tariff no.85211011 for magnetic tapes of a width of 3/4 inch and over	ditto	CNS13439 (2004) CNS 14408 (2004)	√	CISPR 13 IEC 60065	IDT MOD
8521.10.19.00.1 Other magnetic tape-type video tape recorder/player	ditto	CNS13439 (2004) CNS 14408 (2004)	√	CISPR 13 IEC 60065	IDT MOD
8521.10.22.00.6 Magnetic tape-type video tape recorder/player, other than the articles of tariff no.85211021 for magnetic tapes of a width of 3/4 inch and over	ditto	CNS13439 (2004) CNS 14408 (2004)	√	CISPR 13 IEC 60065	IDT MOD

Product type or grouping (Electronics/IT products classified by C.C.C. Code)	Regulations	Standards			
		Domestic Standards	Please tick box if mandatory	Relevant International Standards	Extent of Alignment
8521.10.29.00.9 Other magnetic tape-type video tape player	ditto	CNS13439 (2004) CNS 14408 (2004)	√	CISPR 13 IEC 60065	IDT MOD
8527.12.00.00.4 Pocket-size radio cassette-players	ditto	CNS13439 (2004)	√	CISPR 13	IDT
8543.70.91.00.3 Electrical machines with translation or dictionary functions	ditto	CNS 13438 (2006) CNS 14336-1 (2010)	√	CISPR 22 IEC 60950	IDT MOD
8543.70.99.90.6C Other electrical machines and apparatus (inspection scope: those only DC power)	ditto	CNS13439 (2004)	√	CISPR 13	IDT

Mains Voltage, Frequency and Mains Plug Configuration

Economy	Mains Voltage and Tolerance	Mains Frequency and Tolerance	Applicable Legislation	Mains Plug Configuration				
				Domestic Standard	Please tick box if mandatory	Relevant International Standard	Extent of Alignment	Diagram of Mains Plug Configuration-
Chinese Taipei	110V	60Hz	Commodity Inspection Act 2007	CNS690	√	No	No	
	220V	60Hz	Commodity Inspection Act 2007	CNS690	√	No	No	